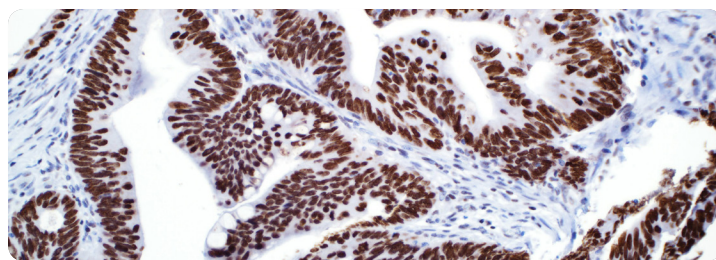


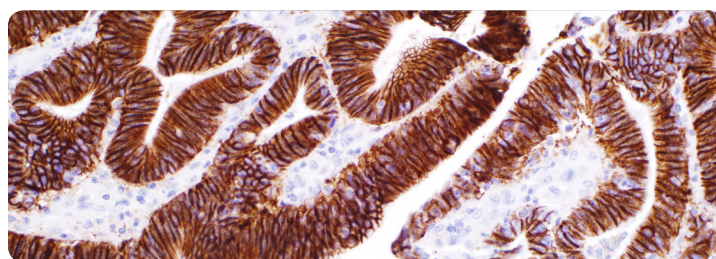
## Cell Marque™ Tissue Diagnostics Gastrointestinal (GI) Pathology



### **SATB2 (EP281)**

#### **Cat. No. 384R-1 (A-E, G)**

SATB2 is a nuclear marker that is valuable in diagnosing tumors of the lower GI tract. It is useful in a diagnostic panel that includes cytokeratin 7, cytokeratin 20, and CDX-2. When used with cytokeratin 7 and cytokeratin 20, the specificity for colorectal carcinoma increases to 100% with the sensitivity over 90%. SATB2 has also shown to identify medullary carcinomas of the colon that are often cytokeratin 20 and CDX-2 negative.



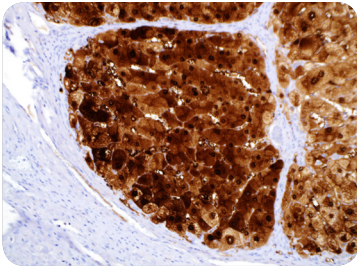
### **Cadherin-17 (SP183)**

#### **Cat. No. 378R-1 (A-E, G)**

Cadherin-17 is expressed in many adenocarcinomas which includes colorectal, pancreatic, and gastric. Cadherin-17 is more commonly used in colorectal adenocarcinomas due to its diffuse and strong staining. In other adenocarcinomas, such as stomach, pancreas, and bile duct, cadherin-17 can be visualized as focal or scattered. Cadherin-17 can be complimentary to E-cadherin as they are both expressed in the intestinal mucosa.

View more at:  
[cellmarque.com/specialties](http://cellmarque.com/specialties)

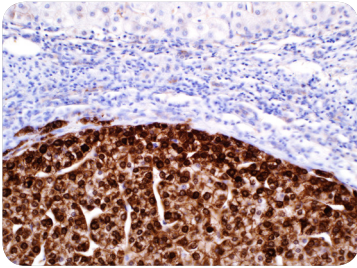




## Arginase-1 (SP156)

### Cat. No. 380R-1 (A-E, G)

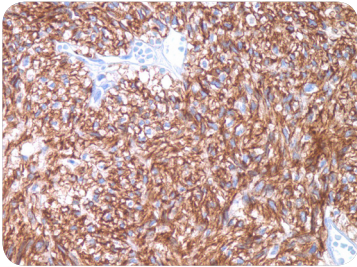
Arginase-1 can be used in a panel of antibodies including Hep Par-1 and glypican-3 to aid in the distinction of benign versus malignant liver tumors in small biopsies. Hepatocellular carcinoma (HCC) is the most common primary malignant tumor of the liver accounting for an estimated 70-80% of total liver cancers worldwide; therefore, arginase-1 can prove to be a reliable marker for the differentiation of liver neoplasms, most importantly HCC.



## Glutamine Synthetase (GS-6)

### Cat. No. 389M-1 (A-E, G)

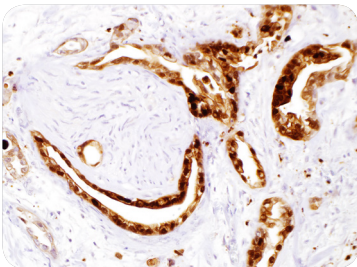
Glutamine synthetase is a key marker in the identification of liver neoplasms, especially hepatocellular carcinoma (HCC). In HCC, glutamine synthetase expresses strongly and diffusely in malignant hepatocytes. It can be used in a panel with glypican-3 and HSP70 to help distinguish between dysplastic and early malignant hepatocellular nodules appearing in cirrhosis.



## DOG1 (SP31)

### Cat. No. 244R-1 (A-E, G)

Anti-DOG1 antibody has been shown to be highly specific and sensitive in the diagnosis of gastrointestinal stromal tumors (GIST). Approximately 4-15% of GIST stain weakly or are negative for c-kit by immunohistochemistry (IHC). In the vast majority of these cases, DOG1 is expressed by IHC.<sup>1-4</sup>



## S100P (16/f5)

### Cat. No. 376M-9 (A-E, G)

S100P is a nuclear pancreatic and urothelial marker. It is used to differentiate malignant from benign pancreas in fine needle aspiration (FNA) samples. It also has a higher sensitivity for transitional cell carcinomas than Uroplakin III.

#### References:

1. Espinosa I, et al. Am J Surg Pathol. 2008; 32:210-8.
2. Miwa S, et al. J Gastroenterol. 2008; 43:531-7.
3. Parfitt JR, et al. Histopathology. 2008; 52:816-23.
4. West RB, et al. Am J Pathol. 2004; 165:107-13.

#### Legend:

**A:** 0.1 mL concentrate

**B:** 0.5 mL concentrate

**C:** 1 mL concentrate

**D:** 1 mL predilute

**E:** 7 mL predilute

**F:** 25 mL predilute

**G:** 5 Positive Control Slides

View more at:

[cellmarque.com/specialties](http://cellmarque.com/specialties)



To place an order or receive technical assistance in countries across Europe and the world, please call: **+1 916-746-8900**

For U.S. and Canada, please call: **1-800-665-7284**

For Technical Service, please email: [international@cellmarque.com](mailto:international@cellmarque.com)

Merck KGaA  
Cell Marque™

[cellmarque.com](http://cellmarque.com)

