



Be Unique in FISH & CISH



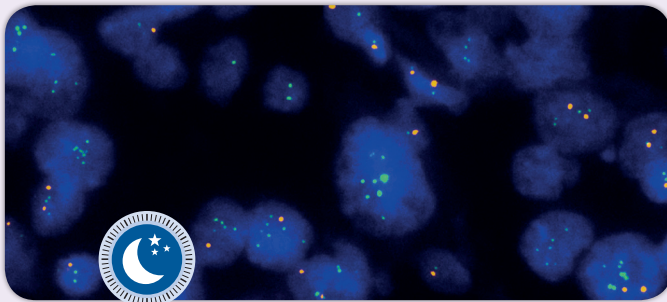
Your Innovative Probe Design Portfolio

Unique Products of the ZytoLight® Portfolio

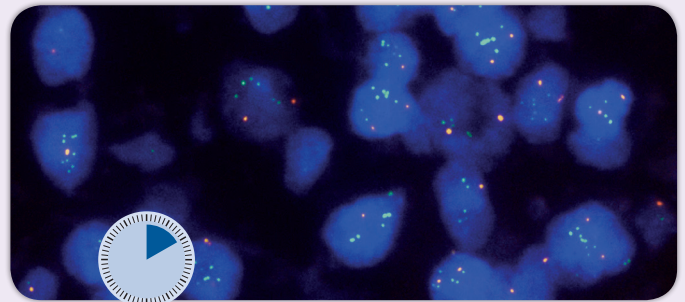
Indication	Prod. No.	Product	Label	Tests* (Volume)
Brain and Neural Tumors	Z-2274-50	ZytoLight SPEC C19MC/19p13 Dual Color Probe C€ IVD	●/●	5 (50 µl)
	Z-2273-50	ZytoLight SPEC TERT Dual Color Break Apart Probe C€ IVD	●/●	5 (50 µl)
Breast Cancer	Z-2172-200	ZytoLight SPEC BCL2L2/14q32 Dual Color Probe C€ IVD	●/●	20 (200 µl)
	Z-2190-50/-200	ZytoLight SPEC ERBB2/D17S122 Dual Color Probe C€ IVD	●/●	5/20 (50/200 µl)
	Z-2186-200	ZytoLight SPEC FGFR3 Break Apart/FGFR2/FGFR1 Quadruple Color Probe C€ IVD	●/●/●/●	20 (200 µl)
	Z-2158-200	ZytoLight SPEC FGF3,4,19/CEN 11 Dual Color Probe C€ IVD	●/●	20 (200 µl)
	Z-2156-200	ZytoLight SPEC GAS6/13q12 Dual Color Probe C€ IVD	●/●	20 (200 µl)
	Z-2173-200	ZytoLight SPEC MCL1/1p12 Dual Color Probe C€ IVD	●/●	20 (200 µl)
	Z-2155-200	ZytoLight SPEC MERTK/2q11 Dual Color Probe C€ IVD	●/●	20 (200 µl)
	Z-2195-200	ZytoLight SPEC VEGFA/CEN 6 Dual Color Probe C€ IVD	●/●	20 (200 µl)
Gastrointestinal Cancer	Z-2014-50/-200	ZytoLight SPEC MAML2 Dual Color Break Apart Probe C€ IVD	●/●	5/20 (50/200 µl)
Lung Cancer	Z-2154-200	ZytoLight SPEC AXL/19p13 Dual Color Probe C€ IVD	●/●	20 (200 µl)
	Z-2117-50/-200	ZytoLight SPEC ALK/EML4 TriCheck™ Probe C€ IVD	●/●/●	5/20 (50/200 µl)
	Z-2179-50/-200	ZytoLight SPEC CD274, PDCD11G2/CEN 9 Dual Color Probe C€ IVD	●/●	5/20 (50/200 µl)
	Z-2205-200	ZytoLight SPEC NTRK2 Dual Color Break Apart Probe C€ IVD	●/●	20 (200 µl)
	Z-2194-200	ZytoLight SPEC NRG1/CD74 TriCheck™ Probe C€ IVD	●/●/●	20 (200 µl)
	Z-2278-200	ZytoLight SPEC RICTOR/5q31.1 Dual Color Probe C€ IVD NEW	●/●	20 (200 µl)
	Z-2127-200	ZytoLight SPEC SOX2/CEN 3 Dual Color Probe C€ IVD	●/●	20 (200 µl)
	Renal Cell Carcinoma	Z-2118-200	ZytoLight SPEC CCND1 Break Apart/2q11/Cen 6 Quadruple Color Probe C€ IVD	●/●/●/●
Z-2102-200		ZytoLight SPEC VHL/1p12/CEN 7/17 Quadruple Color Probe C€ IVD	●/●/●/●	20 (200 µl)
Salivary Gland Tumors	Z-2208-200	ZytoLight SPEC NUTM1 Dual Color Break Apart Probe C€ IVD	●/●	20 (200 µl)
	Z-2014-50/-200	ZytoLight SPEC MAML2 Dual Color Break Apart Probe C€ IVD	●/●	5/20 (50/200 µl)
Sarcoma	Z-2183-50	ZytoLight SPEC EWSR1/FLI1 TriCheck™ Probe C€ IVD	●/●/●	5 (50 µl)
	Z-2185-50	ZytoLight SPEC FOXO1/PAX3 TriCheck™ Probe C€ IVD	●/●/●	5 (50 µl)
	Z-2019-50/200	ZytoLight SPEC FOXO1/PAX7 Dual Color Single Fusion Probe C€ IVD	●/●	5/20 (50/200 µl)
	Z-2132-50	ZytoLight SPEC JAZF1 Dual Color Break Apart Probe C€ IVD	●/●	5 (50 µl)
	Z-2184-50	ZytoLight SPEC SS18/SSX1 TriCheck™ Probe C€ IVD	●/●/●	5 (50 µl)
	Z-2195-200	ZytoLight SPEC VEGFA/CEN 6 Dual Color Probe C€ IVD	●/●	20 (200 µl)
	Hematology	Z-2216-50	ZytoLight SPEC 11q gain/loss Triple Color Probe C€ IVD	●/●/●
Z-2199-50		ZytoLight SPEC ABL1 Dual Color Break Apart Probe C€ IVD	●/●	5 (50 µl)
Z-2200-50		ZytoLight SPEC ABL2 Dual Color Break Apart Probe C€ IVD	●/●	5 (50 µl)
Z-2202-50		ZytoLight SPEC CSF1R Dual Color Break Apart Probe C€ IVD	●/●	5 (50 µl)
Z-2267-50		ZytoLight SPEC CREBBP Dual Color Break Apart Probe C€ IVD	●/●	5 (50 µl)
Z-2277-50		ZytoLight SPEC MEF2D/BCL9 TriCheck™ Probe C€ IVD	●/●/●	5 (50 µl)
Z-2275-50		ZytoLight SPEC ZNF384 Dual Color Break Apart Probe C€ IVD	●/●	5 (50 µl)
Related Products		Z-2028-5	ZytoLight FISH-Tissue Implementation Kit C€ IVD Incl. Heat Pretreatment Solution Citric, 150 ml; Pepsin Solution, 1 ml; Wash Buffer SSC, 210 ml; 25x Wash Buffer A, 50 ml; DAPI/DuraTect-Solution, 0.2 ml	
	Z-2028-20	ZytoLight FISH-Tissue Implementation Kit C€ IVD Incl. Heat Pretreatment Solution Citric, 500 ml; Pepsin Solution, 4 ml; Wash Buffer SSC, 560 ml; 25x Wash Buffer A, 100 ml; DAPI/DuraTect-Solution, 0.8 ml		20
	Z-2099-20	ZytoLight FISH-Cytology Implementation Kit C€ IVD Incl. Cytology Pepsin Solution, 4 ml; 20x Wash Buffer TBS, 50 ml; 10x MgCl ₂ , 50 ml; 10x PBS, 50 ml; Cytology Stringency Wash Buffer SSC, 500 ml; Cytology Wash Buffer SSC, 500 ml; DAPI/DuraTect-Solution, 0.8 ml		20

Unique Products of the FlexISH® Portfolio

Indication	Prod. No.	Product	Label	Tests* (Volume)
Breast Cancer	Z-2166-50/-200	FlexISH ERBB2/CEN 17 Dual Color Probe C€ IVD	●/●	5/20 (50/200 µl)
Lung Cancer	Z-2203-50/-200	FlexISH ALK/ROS1 DistinguISH™ Probe C€ IVD	●/●/●	5/20 (50/200 µl)
	Z-2269-50/-200	FlexISH RET/KIF5B TriCheck™ Probe C€ IVD NEW	●/●/●	5/20 (50/200 µl)
Hematology	Z-2283-50/-200	FlexISH BCL2/BCL6 DistinguISH™ Probe C€ IVD NEW	●/●/●	5/20 (50/200 µl)
Related Products				
	Z-2182-5	FlexISH FISH-Tissue Implementation Kit C€ IVD Incl. Heat Pretreatment Solution Citric, 150 ml; Pepsin Solution, 1 ml; 5x FlexISH Wash Buffer, 150 ml; DAPI/DuraTect-Solution, 0.2 ml		5
	Z-2182-20	FlexISH FISH-Tissue Implementation Kit C€ IVD Incl. Heat Pretreatment Solution Citric, 500 ml; Pepsin Solution, 4 ml; 5x FlexISH Wash Buffer, 500 ml; DAPI/DuraTect-Solution, 0.8 ml		20
	Z-2099-20	ZytoLight FISH-Cytology Implementation Kit C€ IVD Incl. Cytology Pepsin Solution, 4 ml; 20x Wash Buffer TBS, 50 ml; 10x MgCl ₂ , 50 ml; 10x PBS, 50 ml; Cytology Stringency Wash Buffer SSC, 500 ml; Cytology Wash Buffer SSC, 500 ml; DAPI/DuraTect-Solution, 0.8 ml		20



Hybridization time: Overnight FlexISH® ERBB2/CEN 17 Dual Color Probe



Hybridization time: 120 min FlexISH® ERBB2/CEN 17 Dual Color Probe

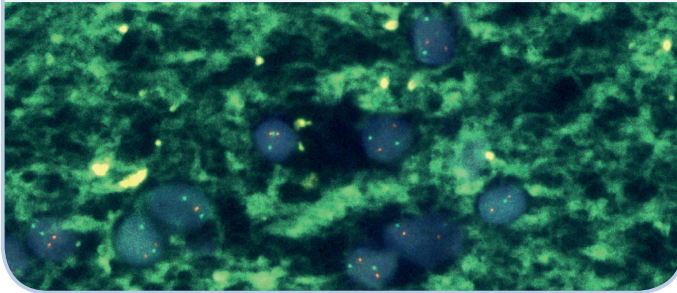
Unique Products of the ZytoDot® and ZytoDot® 2C Portfolio

Indication	Prod. No.	Product	Label	Tests* (Volume)
Brain and Neural Tumors	C-3036-100/-400	ZytoDot 2C SPEC 1p36/1q25 Probe C€ IVD	DNP/DIG	10/40 (100/400 µl)
	C-3037-100/-400	ZytoDot 2C SPEC 19q13/19p13 Probe C€ IVD	DNP/DIG	10/40 (100/400 µl)
	C-3067-400	ZytoDot 2C SPEC CDKN2A/CEN 9 Probe C€ IVD	DIG/DNP	40 (400 µl)
Breast Cancer	C-3068-100	ZytoDot 2C SPEC ERBB2/D17S122 Dual Color Probe C€ IVD	DIG/DNP	10 (100 µl)
	C-3024-400	ZytoDot SPEC ESR1 Probe C€ IVD	DIG	40 (400 µl)
	C-3056-400	ZytoDot 2C SPEC FGFR2/CEN 10 Probe C€ IVD	DIG/DNP	40 (400 µl)
	C-3069-400	ZytoDot 2C SPEC TOP1/CEN 20 Probe C€ IVD	DIG/DNP	40 (400 µl)
Lung Cancer	C-3055-100/-400	ZytoDot 2C SPEC ALK Break Apart Probe C€ IVD	DIG/DNP	10/40 (100/400 µl)
	C-3059-400	ZytoDot 2C SPEC EML4 Break Apart Probe C€ IVD	DIG/DNP	40 (400 µl)
	C-3064-100/-400	ZytoDot 2C SPEC RET Break Apart Probe C€ IVD	DIG/DNP	10/40 (100/400 µl)
	C-3063-100/-400	ZytoDot 2C SPEC ROS1 Break Apart Probe C€ IVD	DIG/DNP	10/40 (100/400 µl)
Sarcoma	C-3062-400	ZytoDot 2C SPEC CDK4/CEN 12 Probe C€ IVD	DIG/DNP	40 (400 µl)
	C-3047-100	ZytoDot 2C SPEC DDIT3 Break Apart Probe C€ IVD	DIG/DNP	10 (100 µl)
	C-3065-100	ZytoDot 2C SPEC FOXO1 Break Apart Probe C€ IVD	DIG/DNP	10 (100 µl)
Hematology	C-3073-100	ZytoDot 2C SPEC BCL2 Break Apart Probe C€ IVD	DIG/DNP	10 (100 µl)
	C-3074-100	ZytoDot 2C SPEC BCL6 Break Apart Probe C€ IVD	DIG/DNP	10 (100 µl)
	C-3075-100	ZytoDot 2C SPEC CCND1 Break Apart Probe C€ IVD	DIG/DNP	10 (100 µl)
	C-3071-100	ZytoDot 2C SPEC IGH Break Apart Probe C€ IVD	DIG/DNP	10 (100 µl)
	C-3072-100	ZytoDot 2C SPEC MALT1 Break Apart Probe C€ IVD	DIG/DNP	10 (100 µl)
	C-3066-400	ZytoDot 2C SPEC MYC Break Apart Probe C€ IVD	DIG/DNP	40 (400 µl)
Genetics	C-3026-400	ZytoDot SPEC 21q22 Probe C€ IVD	DIG	40 (400 µl)
Related Products				
	C-3044-10	ZytoDot 2C CISH Implementation Kit C€ IVD Incl. Heat Pretreatment Solution EDTA, 150 ml; Pepsin Solution, 1 ml; Wash Buffer SSC, 210 ml; 20x Wash Buffer TBS, 50 ml; Anti-DIG/DNP-Mix, 1 ml; HRP/AP-Polymer-Mix, 1 ml; AP-Red Solution A, 0.1 ml; AP-Red Solution B, 4 ml; HRP-Green Solution A, 0.2 ml; HRP-Green Solution B, 4 ml; Nuclear Blue Solution, 4 ml; Mounting Solution (alcoholic), 1 ml		10
	C-3044-40	ZytoDot 2C CISH Implementation Kit C€ IVD Incl. Heat Pretreatment Solution EDTA, 500 ml; Pepsin Solution, 4 ml; Wash Buffer SSC, 560 ml; 20x Wash Buffer TBS, 2x 50 ml; Anti-DIG/DNP-Mix, 4 ml; HRP/AP-Polymer-Mix, 4 ml; AP-Red Solution A, 0.4 ml; AP-Red Solution B, 15 ml; HRP-Green Solution A, 0.8 ml; HRP-Green Solution B, 15 ml; Nuclear Blue Solution, 20 ml; Mounting Solution (alcoholic), 4 ml		40
	WB-0009-500	Clear-it™ Stringency Buffer C€ IVD		500 ml

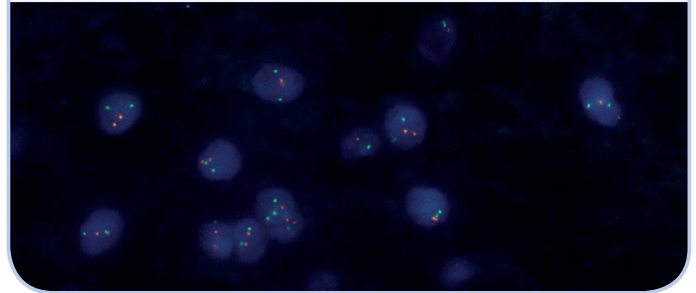
ZyBlack™ Quenching Solution reduces Autofluorescence

Several types of tissue tend to emit intense autofluorescence, including brain, making it difficult to evaluate FISH results. **ZyBlack™ Quenching Solution** is a ready-to-use solution that reduces autofluorescence without adversely affecting tissue integrity or specific fluorescence signals. It can be easily incorporated into the FISH protocol by applying it after the proteolytic pretreatment.

Without ZyBlack™ Quenching Solution



With ZyBlack™ Quenching Solution

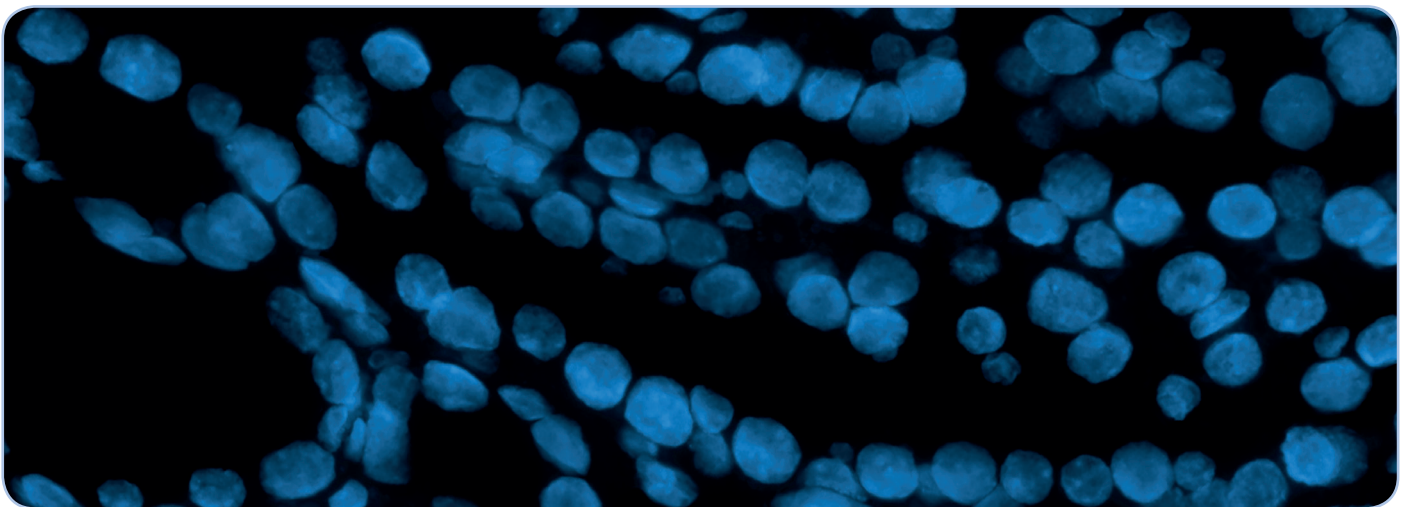


Brain tissue section hybridized with the ZytoLight® SPEC 1p36/1q25 Dual Color Probe.

Prod. No.	Product	Volume
BS-0002-8	ZyBlack™ Quenching Solution CE IVD	8 ml

DAPI/DuraTect™ – Solutions preserve Fluorescence Signals

ZytoVision's DAPI/Antifade Mounting Solutions are optimized to use on tissue or cell specimens and prevent permanent loss of fluorescence and protect fluorescent dyes from photobleaching during fluorescence microscopy.



Prod. No.	Product	Concentration	Storage Temperature	Description
MT-0007-0.8	DAPI/DuraTect™-Solution, 0.8 ml CE IVD	150 ng DAPI/ml	2...8°C	<ul style="list-style-type: none"> · Best overall signal protection · Superior signal stability of mounted tissue sections (≤3 months at 2...21°C)
MT-0008-0.8	DAPI/DuraTect™-Solution (ultra), 0.8 ml CE IVD	1360 ng DAPI/ml	2...8°C	<ul style="list-style-type: none"> · Best overall signal protection · Superior signal stability of mounted tissue sections (≤3 months at 2...21°C) · Recommended when a more intense DAPI stain is desired

* Using 10 µl probe solution per test. CE IVD only available in certain countries. All other countries research use only! Please contact your local dealer for more information. Based on publicly available data given on e.g. webpages of the companies Cytocell, Dako/Agilent, Kreatech/Leica, Invitrogen/ThermoFisher, Ventana/Roche, Vysis/Abbott Molecular.

CE IVD only available in certain countries. All other countries research use only! Please contact your local dealer for more information.

 ZytoVision GmbH · Fischkai 1 · 27572 Bremerhaven · Germany · www.zytovision.com

For more product information please contact info@zytovision.com or your local dealer.

ZYTOVISION
Molecular diagnostics simplified