

p63 (IHC063)



p63 is a tumor suppressor protein that is very similar to p53 in structure and function, while being homologous to p73. p63 is important in development and differentiation, and has been identified as a useful marker for distinguishing between lung squamous cell carcinomas and adenocarcinomas. Anti-p63 is also used to differentiate between benign and malignant prostate and breast lesions, due to its labeling of the nuclei of myoepithelial cells in both tissue types.

Features

- GeneAb p63 antibody produces specific nuclear staining with no nonspecific cytoplasmic staining observed
- Both concentrate (1:100 - 1:400) and predilute (RTU) format are available for your lab
- Unbelievable price starting at \$140 USD

Product Information

REF	Description	Price
IHC063-100	0.1 ml, Concentrate	\$140
IHC063-1	1 ml, Concentrate	\$545
IHC063-7	7 ml, Predilute	\$250
IHC063-25	25 ml, Predilute	\$750
IHC063-PC	3 Positive Control Slides	\$180

Source Mouse Monoclonal

Designations IVD:   RUO:   

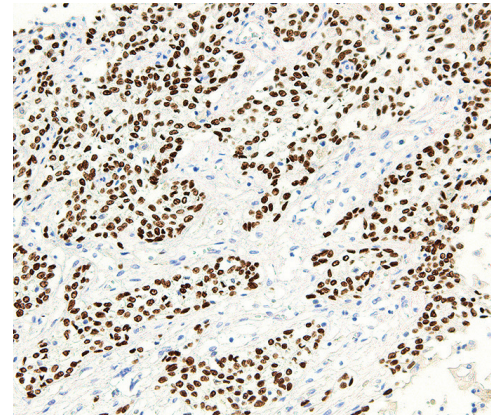


Fig1. GeneAb™ p63 [IHC063] on Bladder Cancer

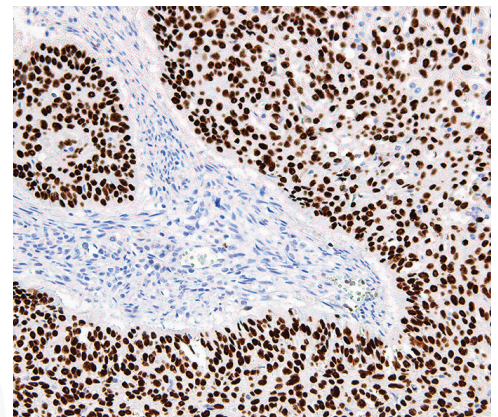


Fig2. GeneAb™ p63 [IHC063] on Cervix Squamous Cell Carcinoma

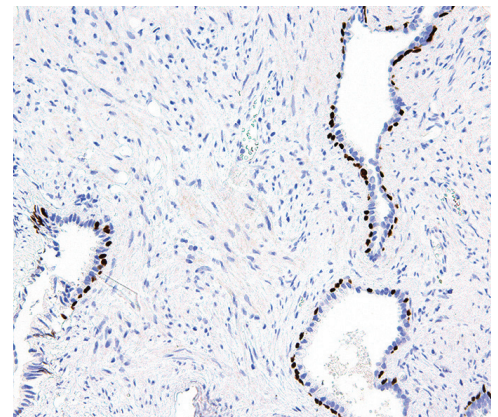


Fig3. GeneAb™ p63 [IHC063] on Prostate

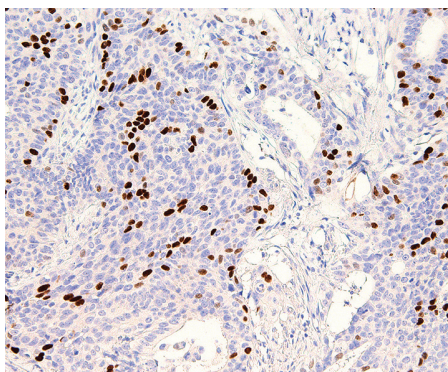


Fig4. GeneAb™ p63 [IHC063] on Cervix Low Differentiation

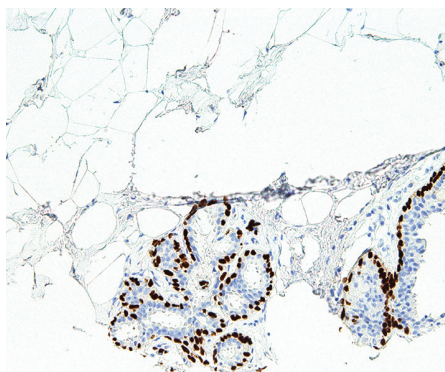


Fig5. GeneAb™ p63 [IHC063] on Normal Breast

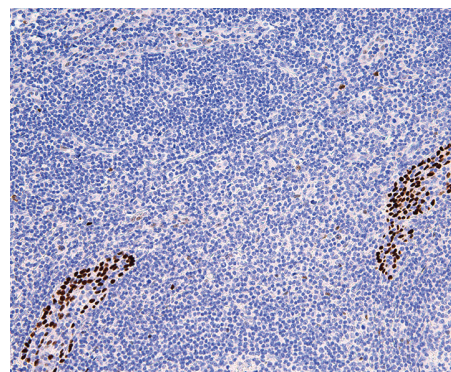


Fig6. GeneAb™ p63 [IHC063] on Tonsil

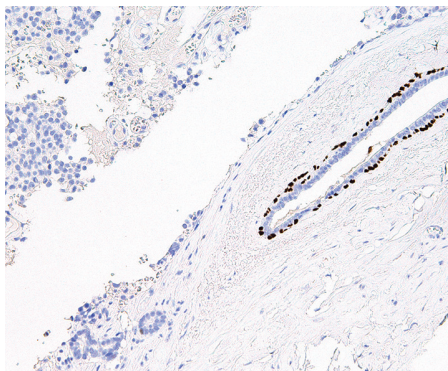


Fig7. GeneAb™ p63 [IHC063] on Breast Cancer

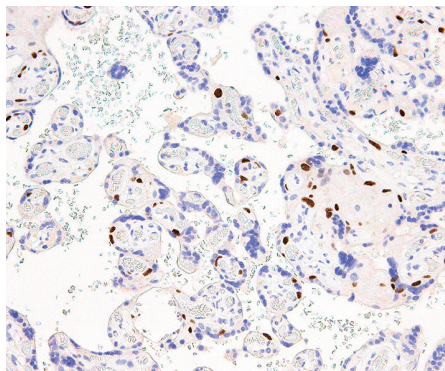


Fig8. GeneAb™ p63 [IHC063] on Placenta

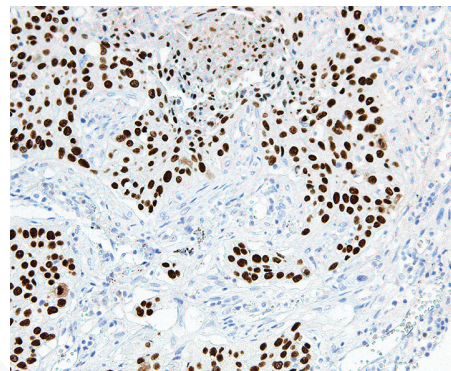


Fig9. GeneAb™ p63 [IHC063] on Lung Squamous Carcinoma

System	Normal	Cancer
Digestive		
Colon	0/3	0/5
Esophagus	1/3	1/2
Gallbladder	—	0/1
Liver	0/1	0/4
Pancreas	0/2	1/2
Rectal	0/1	0/1
Salivary Gland	1/1	—
Intestine	—	0/2
Stomach	—	0/2
Endocrine		
Adrenal Gland	0/1	—
Parathyroid	0/1	—
Thyroid	0/1	0/2
Pituitary Gland	0/1	—
Integumentary		
Skin	3/3	2/2
Melanoma	—	0/2
Lymphatic		
Spleen	0/2	—
Thymus	—	1/1
Tonsil (Fig6)	2/2	—
Lymphoma	—	2/5

System	Normal	Cancer
Muscular/Skeletal		
Bone Marrow	0/1	—
Heart Muscle	0/3	—
Skeletal Muscle	0/1	—
Nervous		
Brain	0/1	1/4
Peripheral Nerve	0/3	—
Respiratory		
Lung (Fig9)	0/2	2/4
Reproductive		
Breast (Fig5, Fig7)	1/1	2/4
Cervix (Fig2, Fig4)	4/4	—
Endometrium	0/1	0/1
Ovary	—	0/4
Placenta (Fig8)	2/2	—
Prostate (Fig3)	2/2	0/2
Testis	1/3	0/1
Urinary		
Kidney	0/3	0/2
Urinary Bladder (Fig1)	—	1/1