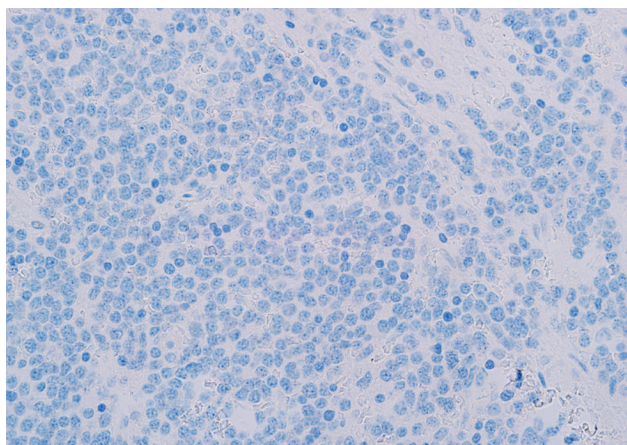
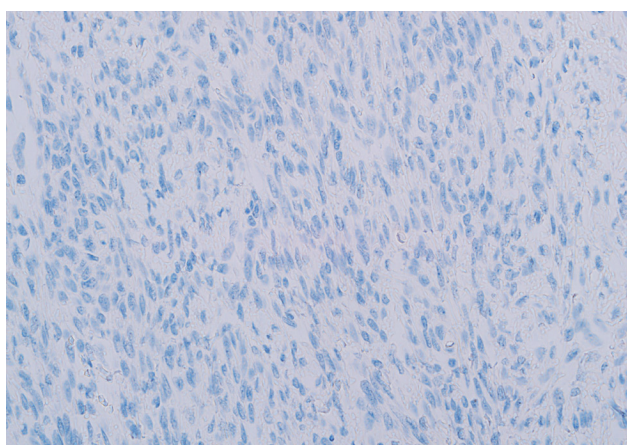
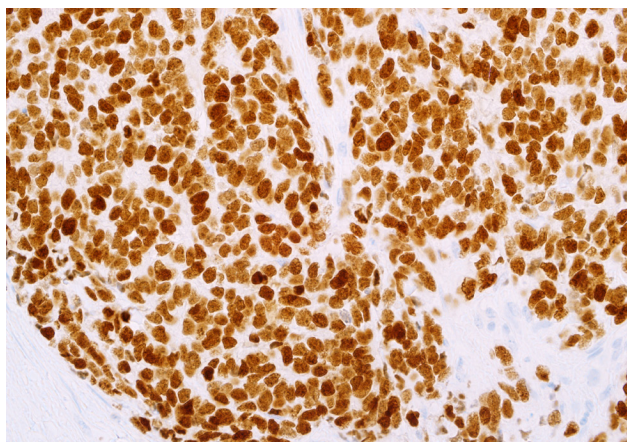


Spotlight on: NKX2.2 (EP336)



Top: NKX2.2 is strongly expressed in the nuclei of Ewing sarcoma cells.

Center: Rhabdomyosarcoma is negative for NKX2.2.

Bottom: Neuroblastoma is negative for NKX2.2.

Ewing sarcoma is a neoplasm found in the bone or soft tissue. It is a rare tumor, but is the second most prevalent type of bone cancer in children.¹ The differential diagnosis can be challenging as it mimics several small round cell tumors. The most common immunohistochemical test to identify Ewing sarcoma is CD99. However, while CD99 is both specific and sensitive for Ewing sarcoma, traditional mouse monoclonal CD99 antibodies can give inconsistent and suboptimal results.^{2,3}

NKX2.2 is a transcription factor that plays a role in neuroendocrine and glial differentiation. It is also upregulated in Ewing sarcoma,⁴ making it a valuable differential marker for small round cell tumors where Ewing sarcoma is considered.⁵ NKX2.2 has shown both a high sensitivity and high specificity for identification of Ewing sarcoma.⁶

Benefits of NKX2.2 from Cell Marque™:

- *In vitro* diagnostic
- Nuclear visualization
- Compatible with multiple automation systems
- High sensitivity and specificity for Ewing sarcoma⁶

Ordering Information:

Volume	Part No.	Volume	Part No.
0.1 ml, concentrate	445R-14	1 ml, prediluted	445R-17
0.5 ml, concentrate	445R-15	7 ml, prediluted	445R-18
1 ml, concentrate	445R-16	Positive control slides	445S

References:

1. <https://www.stjude.org/disease/ewing-sarcoma.html>
2. <http://www.nordiqc.org/epitope.php?id=35>
3. http://www.nordiqc.org/downloads/assessments/28_35.pdf
4. Smith R, et al. Cancer Cell. 2006 May; 9(5):405-16.
5. <http://www.nature.com/modpathol/journal/v29/n4/full/modpathol201631a.html>
6. Yoshida A, et al. Am J Surg Pathol. 2012 Jul;36(7):993-9.

Using RabMAb® technology from Abcam, NKX2.2 has the sensitivity of a rabbit antibody with the specificity and cleanliness of a monoclonal antibody for a strong signal to noise ratio.



Toll-Free: 800.665.7284
Direct: 916.746.8900
service@cellmarque.com
www.cellmarque.com