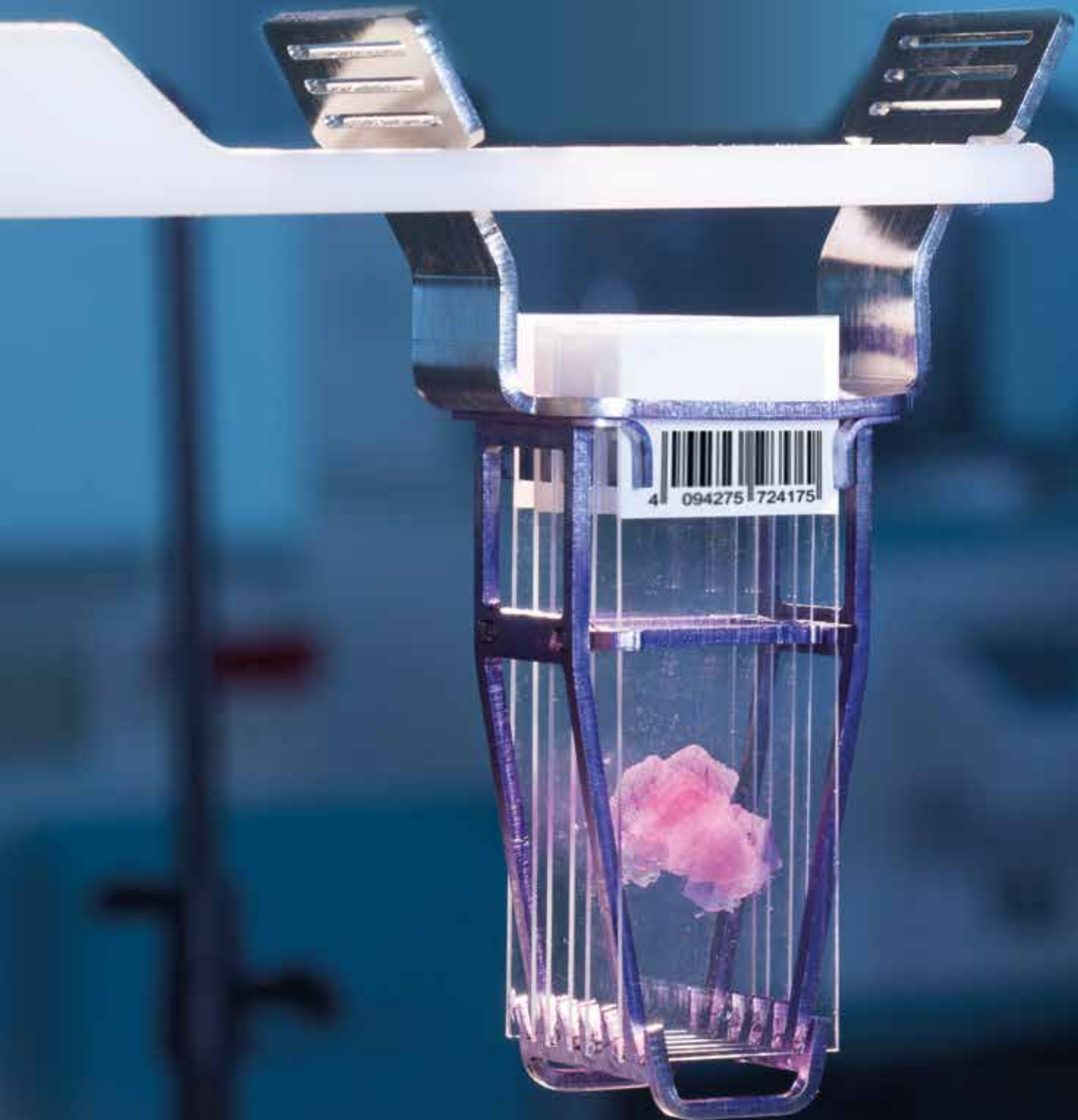


# PRESTO

Processor/Stainer for  
high-quality frozen sections



**MILESTONE**  
HELPING  
PATIENTS

## Need good results? Start with good preparation

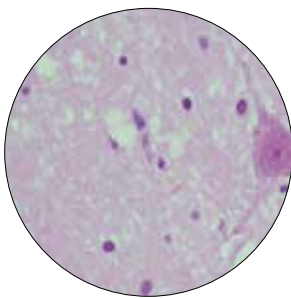
The clinical laboratory relies heavily on the frozen section technique to provide intraoperative consultations when the surgeon requires a rapid diagnosis or immediate feedback relating to surgical margins.

Frozen sections provide a short turnaround time (15-20 minutes) but with the disadvantage of lower diagnostic quality than paraffin sections due to cryoembedding artifacts and variability of staining protocols. A major reason for the lower quality versus a FFPE section is that frozen sections are only stained while FFPE sections are first processed (fixation + dehydration + clearing) and subsequently stained.

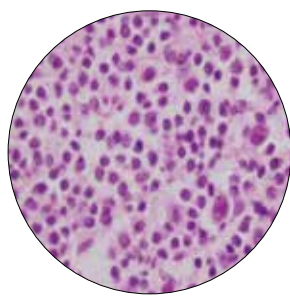
**PRESTO** is an innovative benchtop processor/stainer for high quality frozen sections. It features a standardized approach to first processing the slide, with FineFIX (a Milestone proprietary solution) followed by fully automated staining protocols.



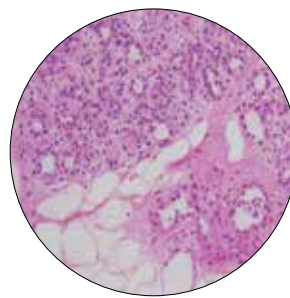
## Improve morphology of your frozen sections



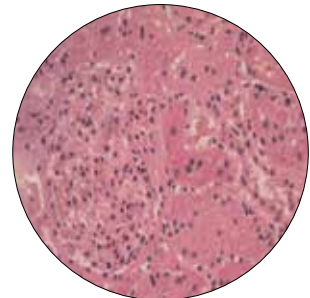
*Brain*



*Lymph Node*



*Breast*



*Kidney*

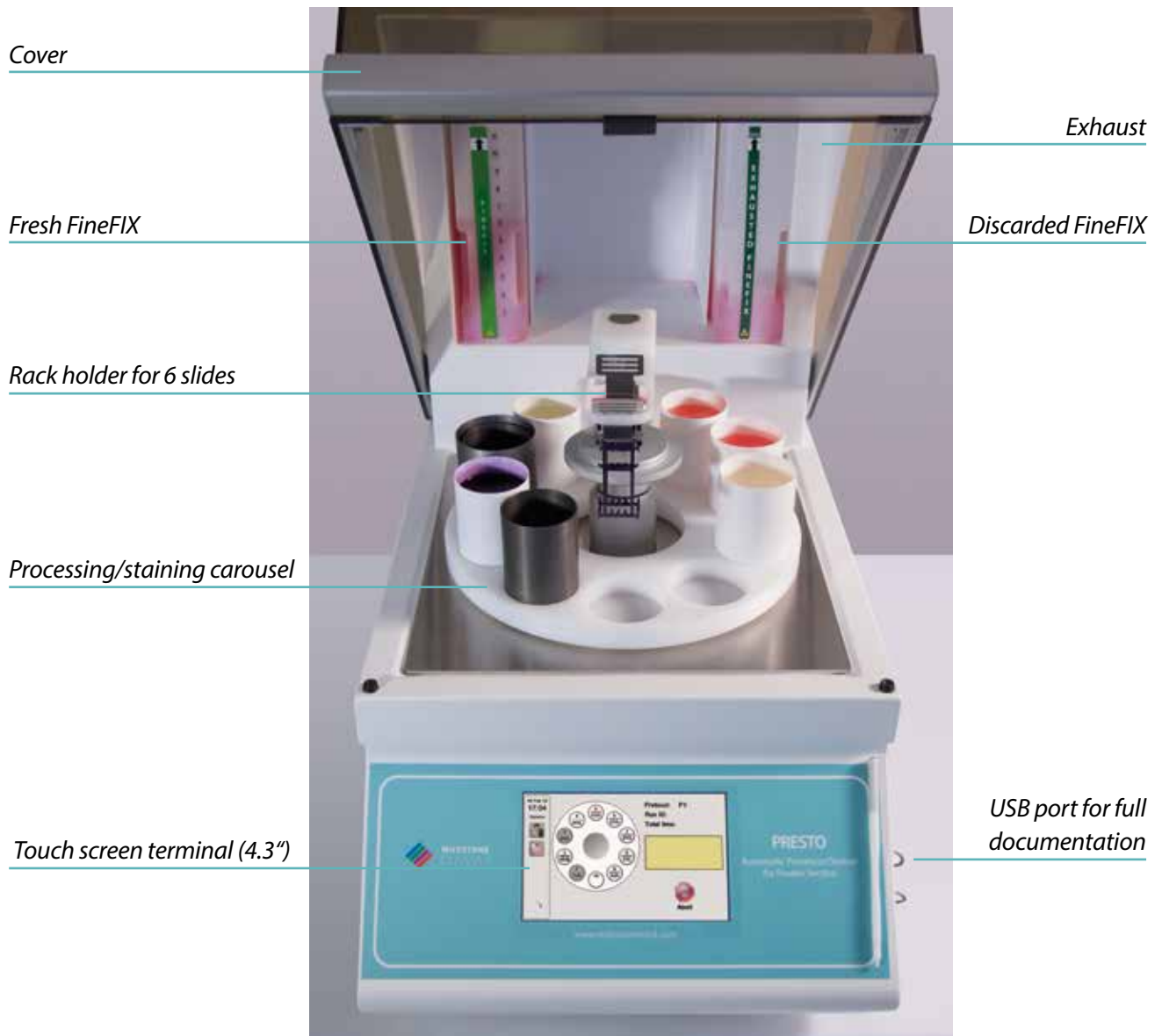
*Results obtained with porcine tissues in less than 10 minutes including PrestoCHILL cryo-embedding, cutting, plus processing and H&E staining with PRESTO unit.*

## Improve morphology **and** total staining turnaround time

Fixation	] 1 MINUTE
Dehydration	
Clearing	
H&E Staining	] 3 MINUTES



# PRESTO. The final step towards high-quality frozen sections



*PRESTO - Benchtop processor/stainer*

## What sets us apart ?

THE UNIQUE COMBINATION OF SLIDE  
PROCESSING\*, WITH FULLY PROGRAMMABLE  
STAINING PROTOCOLS.

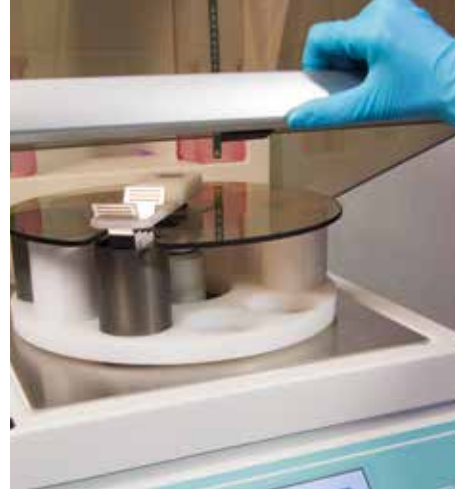
\*INTERNATION PATENT APPLIED FOR

## **Simple.** Intuitive operation makes everyone an expert



1

*Position slide rack over the FineFIX processing vessel.*



2

*Close cover.*



3

*Press START.*



4

*After 4 minutes slides are stained. Slides are now ready for coverslipping and examination.*

**This is processing/staining the way it should be**

**FULLY AUTOMATED**

**FAST: 4 MINUTES FOR 6 SLIDES**

**QUALITY RESULTS, INDEPENDENT OF OPERATOR SKILL**

**STANDARDIZED STAINING RESULTS**

**OPEN STAINING REAGENT PLATFORM**

**FULLY DOWNLOADABLE DOCUMENTATION**



# The **unique protocol** of PRESTO



- 1 Immersion of a rack with up to 6 slides for 60 seconds in preheated (37°C) FineFix solution for simultaneous: ***specimen fixation, dehydration and clearing.*** FineFix is a patented (EP 1455174B1-US 20050074422) formalin-free solution, ethanol based (70%) ideal for histological applications and molecular studies.

## Easy operation

16 Feb 15 17:03  
Service

Protocol : P1

Vessel	Reagent	Time (sec)	Dipping	Dripping
1	FineFIX	60	—	—
3	Water	10	✓	—
2	Hematoxilin	30	✓	✓
3	Water	10	✓	—
4	Acetic Acid	4	✓	—
3	Water	4	✓	—
5	Eosin	14	✓	✓
6	Ethanol	10	✓	—
7	Ethanol	10	✓	—
8	Xylene	10	✓	—

Operator can easily set protocols to fit his lab requirements.



User friendly intuitive software.



## PRESTO unique features

### •IMPROVED MORPHOLOGY

Assure high quality, consistent staining results independent from operator skill.

### •HIGH PRODUCTIVITY

Improve flow and productivity. While slides are automatically stained, the operator is free to cryoembed and cut new specimens.

### •FAST

Reduce processing/staining time to 4 minutes.

### •HIGH FLEXIBILITY

Set and modify protocols according to your specific requirements  
Use your own staining reagents.

### •FULL DOCUMENTATION

Enable both updating of software and downloading of event logs through USB port.

### •SAFE

Built-in exhaust system.

## Technical specifications

- Processor/Stainer for up to 6 slides
- 4.3" touch screen terminal. 1 USB port
- Dimensions: *h* 80 cm/31.5" (with cover open 87,5 cm/34.4")  
*w* 40 cm/15.7" - *d* 92cm/36.2"
- Weight: 60Kg - 132 lbs
- Power supply: 230V~ 50/60Hz or 115V~ 60Hz (500W)

**MILESTONE**



HELPING  
PATIENTS

**MILESTONE Srl** - Via Fatebenefratelli, 1/5 - 24010 Sorisole (BG) - Italy  
Tel: +39 035 4128264 - Fax: +39 035 575498  
www.milestonemedsrl.com - email: medical@milestonesrl.com

**UNI EN ISO 9001: 2008 / UNI EN ISO 13485:2012 CERTIFIED**

**MILESTONE MEDICAL TECHNOLOGIES, INC.**  
6475 Technology Avenue, Suite F, Kalamazoo, MI 49009 - USA  
Tel: 269-488-4950 - Toll-free: 866-995-5300 - Fax: 269-488-4949  
www.milestonemed.com - email: info@milestonemed.com

In your country: