



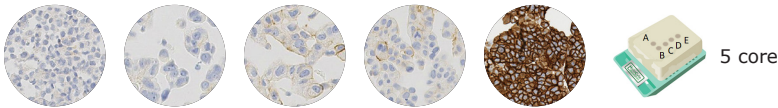
Distributed by Cell Marque™ Tissue Diagnostics

Quality in Control

## Dynamic Range Products

### Breast Analyte Control<sup>DR</sup>

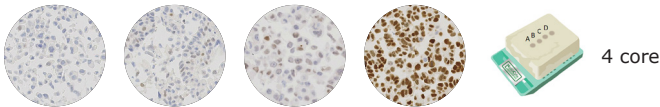
The multi-purpose Breast Dynamic Range Analyte Control contains five cell lines that demonstrate a dynamic range of expression for ER, PR and HER2. Ideal for use as a same slide control in IHC for laboratories that need a general use breast control.



Format	Code
Slide(2)	HCL016
Slide(5)	HCL017
Block	HCL018

### Estrogen Receptor Analyte Control<sup>DR</sup>

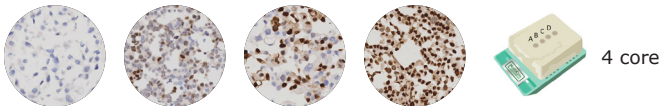
ER Dynamic Range Analyte Control contains four cores, offering a full range of expression for ER: negative, low, medium, and high.



Format	Code
Slide(2)	HCL029
Slide(5)	HCL030
Block	HCL031

### Progesterone Receptor Analyte Control<sup>DR</sup>

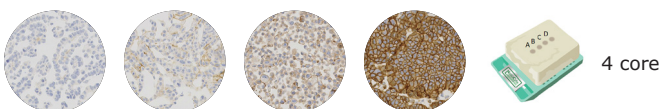
Progesterone Receptor Analyte Control<sup>DR</sup> contains four cores, offering a range of expression for PR: negative, low/intermediate, intermediate/high, and high.



Format	Code
Slide(2)	HCL032
Slide(5)	HCL033
Block	HCL034

### HER2 Analyte Control<sup>DR</sup>

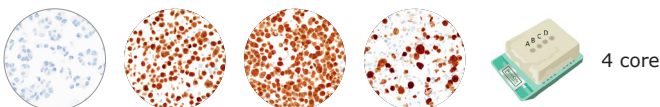
HER2 Dynamic Range Analyte Control has a full dynamic range of expression. Enhanced from the multi-purpose breast analyte control to include a 2+ cell line, this is specifically aimed for being a reliable, sensitive and accurate control for HER2.



Format	Code
Slide(2)	HCL026
Slide(5)	HCL027
Block	HCL028

### HPV/p16 Analyte Control<sup>DR</sup>

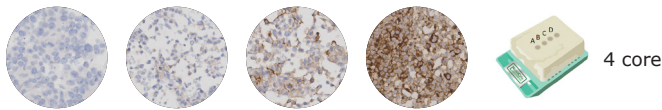
The HPV/p16 Dynamic Range Analyte Control contains four cell lines that demonstrate a full dynamic range of expression for high risk human papillomavirus types 16 and 18: high, medium, low and negative. The same cell lines demonstrate high homogenous, high heterogenous and negative expression of p16. Ideal for use as a same slide control for HPV *in situ* hybridization and p16 IHC where maximum sensitivity is required.



Format	Code
Slide(2)	HCL001
Slide(5)	HCL002
Block	HCL003

### PD-L1 Analyte Control<sup>DR</sup>

PD-L1 Dynamic Range Analyte Control consists of four different cell lines with PD-L1 expression levels of high, medium, low and negative. Ideal for use as a same slide control for PD-L1 to demonstrate the sensitivity of the assay.



Format	Code
Slide(2)	HCL019
Slide(5)	HCL020
Block	HCL021

## Standard Products

### ALK-Lung (EML4-ALK) Analyte Control

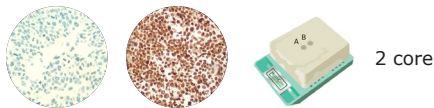
ALK-Lung Analyte Control contains two cell lines that demonstrate positive and negative expression of EML4-ALK associated lung cancer. Ideal for use as a same slide control in IHC to demonstrate the reagents have been correctly applied to the slide.



Format	Code
Slide(2)	HCL007
Slide(5)	HCL008
Block	HCL009

### ALK-Lymphoma (NPM-ALK) Analyte Control

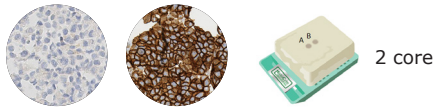
ALK-Lymphoma Analyte Control contains two cell lines that demonstrate positive and negative expression of NPM-ALK associated lymphoma. Ideal for use as a same slide control in IHC to demonstrate the reagents have been correctly applied to the slide.



Format	Code
Slide(2)	HCL010
Slide(5)	HCL011
Block	HCL012

### Breast Analyte Control (ER, PR and HER2)

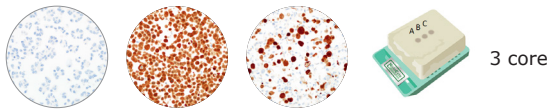
The multi-purpose Breast Analyte Control contains two cell lines that demonstrate positive and negative expression of ER, PR and HER2. Ideal for use as a same slide control in IHC to demonstrate the reagents have been correctly applied to the slide.



Format	Code
Slide(2)	HCL013
Slide(5)	HCL014
Block	HCL015

### HPV/p16 Analyte Control

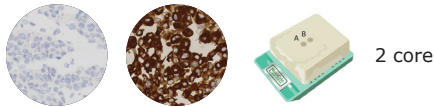
HPV/p16 Analyte Control contains three cell lines that demonstrate high, medium and negative expression of high risk human papillomavirus types 16 and 18. The same cell lines also demonstrate high homogenous, high heterogenous and negative expression of p16. Ideal for use as a same slide control for HPV *in situ* hybridization and p16 IHC to demonstrate assay sensitivity.



Format	Code
Slide(2)	HCL004
Slide(5)	HCL005
Block	HCL006

### ROS1 Analyte Control

ROS1 Analyte Control contains two cell cores: one positive for ROS1 and the other negative.



Format	Code
Slide(2)	HCL022
Slide(5)	HCL023
Block	HCL024