

Bulk Recombinant Proteins and Antibodies

We're familiar with the frustrations researchers face identifying reagents tailored to their needs. To minimize these frustrations, we offer a number of custom capabilities including bulk product requests. Our bulk products are produced under the same quality standards as our single vial reagents and provide additional discounting.

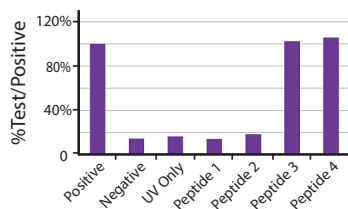
Request a bulk product: [biolegend.com/en-us/bulk-request](https://www.biolegend.com/en-us/bulk-request)

Watch our new video highlighting our recombinant protein production process and validation methods:
[biolegend.com/en-us/recombinant-proteins](https://www.biolegend.com/en-us/recombinant-proteins)



ELISA Kits and Sets

Our new LEGEND MAX™ Flex-T™ Human Class I Peptide Exchange ELISA Kit allows you to qualitatively evaluate the efficiency of the UV peptide exchange when building MHC Tetramers with our Flex-T™ reagents. Each assay kit comes with a pre-coated plate and analytically validated, ready-to-use reagents.



Flex-T™ HLA-A*02:01 UVX monomer was treated with a 366 nm UV in the presence of peptide. After exchange each reaction mixture was analyzed using the ELISA kit. Absorbance values are shown as percentile of test peptide compared to the positive control peptide.

LEGEND MAX™ Flex-T™ Human Class I Peptide Exchange ELISA kit

Size	Cat. No.
1 Pre-coated Plate	447207

Each of our ELISA kits offers high accuracy, sample linearity, and is tested on biologically relevant samples. For additional convenience, we offer three types of kits for everyone from ELISA experts to beginners.

LEGEND MAX™ ELISA Kits: Ready-to-use kits, containing all necessary reagents including a pre-coated plate.

ELISA MAX™ Deluxe Sets: Cost-effective option containing pre-optimized reagents and some additional buffers.

ELISA MAX™ Standard Sets: The most economical option, providing only the core reagents required for an ELISA.

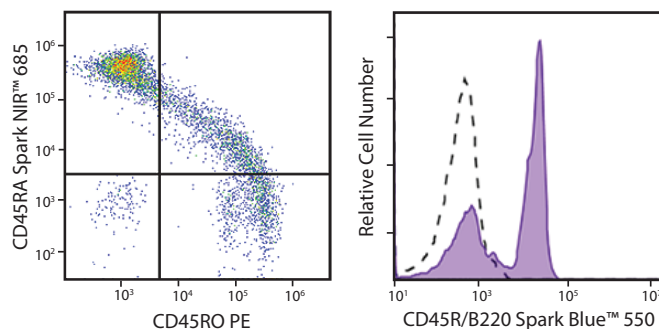
Learn more about our Flex-T™ ELISA: [biolegend.com/en-us/Flex-T](https://www.biolegend.com/en-us/Flex-T)

Learn more about our ELISAs: [biolegend.com/en-us/ELISA](https://www.biolegend.com/en-us/ELISA)

New Spark Conjugates

We continue to expand our Spark Blue™ 550 and Spark NIR™ 685 antibody conjugates to include more targets, making it easier to build large multicolor panels for spectral cytometers. Spark Blue™ 550 is primarily excited off of the 488 nm laser and emits between the peak emissions of FITC and PE. Spark NIR™ 685 is excited by the 633 nm laser and fills the spectral gap between APC and Alexa Fluor® 700.

Learn more about Spark Dyes: [biolegend.com/en-us/spark](https://www.biolegend.com/en-us/spark)



(Left) Human peripheral blood lymphocytes were stained with CD45RO PE and CD45RA Spark NIR™ 685. Gates were determined based on CD45RO single stained controls. (Right) C57BL/6 mouse splenocytes were stained with CD45R/B220 Spark Blue™ 550 (filled histogram). Open histogram represents unstained cells.

2020

Mar/Apr | NewsLegend

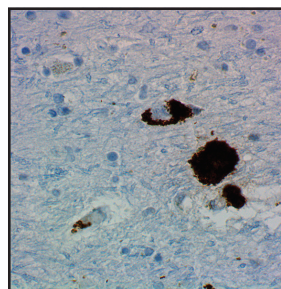
World-Class Quality | Superior Customer Support | Outstanding Value



Neuroscience Spotlight

Explore pathways of neurodegeneration with our new anti-Parkin antibodies, developed in collaboration with The Michael J. Fox Foundation. Mutations in Parkin, a component of the E3 ubiquitin ligase complex, are associated with Parkinson's disease. Each lot of these antibodies is quality tested for western blotting or IHC, ensuring reliable detection across multiple applications.

Find more reagents: [biolegend.com/en-us/neurodegeneration](https://www.biolegend.com/en-us/neurodegeneration)



IHC staining using purified anti-Parkin antibody (clone A15165E) on formalin-fixed, paraffin-embedded Parkinson's disease substantia nigra tissue.

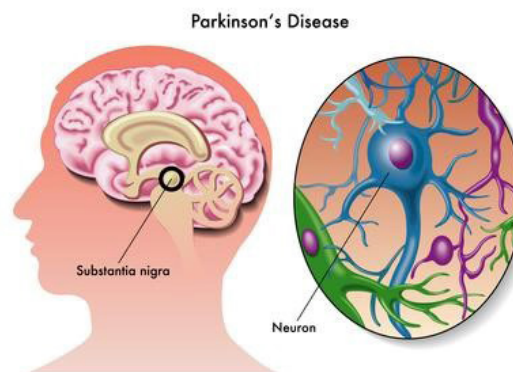
Description	Clone	Size	Cat. No.
Purified anti-Parkin Antibody	A15165D	25 µg 100 µg	870501 870502
Purified anti-Parkin Antibody	A15165E	25 µg 100 µg	870401 870402

Parkinson's Disease Webpage

Find antibodies, ELISA kits, and recombinant proteins to study Parkinson's on our Parkinson's disease webpage. Learn more about the structure and function of proteins associated with the disease, including α -Synuclein, DJ-1, PINK1, and LRRK2, and the reagents we offer to detect them.

Find additional information at:

[biolegend.com/en-us/parkinsons-disease](https://www.biolegend.com/en-us/parkinsons-disease)



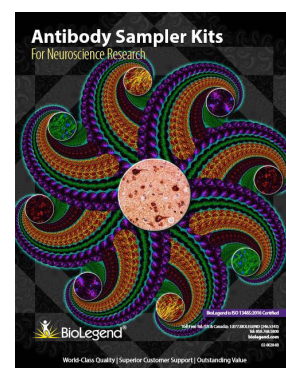
Antibody Sampler Kit Webpage

Check out our new Antibody Sampler Kit webpage for a valuable resource outlining each target and antibody clone in our antibody sampler kits. Sampler kits offer an economical means to try multiple antibodies in smaller sizes, so you can find what works best for you before committing to a larger purchase.

Browse our sampler kits: [biolegend.com/en-us/sampler-kits](https://www.biolegend.com/en-us/sampler-kits)

Examine groups of proteins, cell types, or target areas with our sampler kits, including:

- APP/A β Sampler kit
- Neuron Marker Sampler Kit
- Autophagy Sampler kit



BioLegend Product Portfolio

BioLegend has an expanding portfolio of over 24,000 products that offer total solutions for your research needs. Visit our website to see our latest product releases and offers.

[biolegend.com/en-us/explore-new-products](https://www.biolegend.com/en-us/explore-new-products)

Come and Meet Us!

March 25-27, 2020
Society of Virology
Annual Meeting
Berlin, Germany

April 24-29, 2020
AACR Annual
Meeting
Booth #1323
San Diego, CA

May 8-12, 2020
IMMUNOLOGY 2020
Booth #601
Honolulu, HI

Alexa Fluor® is a registered trademark of Life Technologies Corporation. BioLegend products are manufactured in an ISO 13485:2016 certified facility following GMP compliant procedures, ensuring the highest quality and stability.

[biolegend.com](https://www.biolegend.com)
02-0001-711