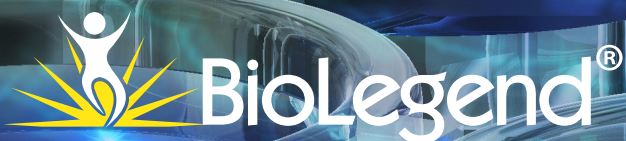


Immunoassays

LEGENDplex™ & ELISA Kits



BioLegend is ISO 13485:2016 Certified

Toll-Free Tel (US & Canada): 1.877.BIOLEGEND (246.5343)

Tel: 858.768.5800

biolegend.com

02-0017-02

World-Class Quality | Superior Customer Support | Outstanding Value

Enabling Legendary Discovery

BioLegend's mission is to accelerate scientific discovery by providing high quality research products at an outstanding value. Our thoroughly validated immunoassays quantify cytokines, chemokines, and soluble biomarkers with legendary sensitivity, precision, and accuracy. With a portfolio that ranges from our LEGENDplex™ multiplex panels to coated and uncoated ELISA kits and sets, BioLegend's immunoassays deliver reliable results quickly, easily, and consistently.

Everyday our research partners work to make discoveries happen in cancer therapy, neuroscience, and immunology. Our 100% satisfaction guarantee provides them with peace of mind, so that they can be confident in their results every time. Their success is our success, and we proudly stand next to them on their path to legendary discovery.

ELISA Kits and Sets information begins on page 16.

LEGENDplex™ Multi-Analyte Flow Assay Kits

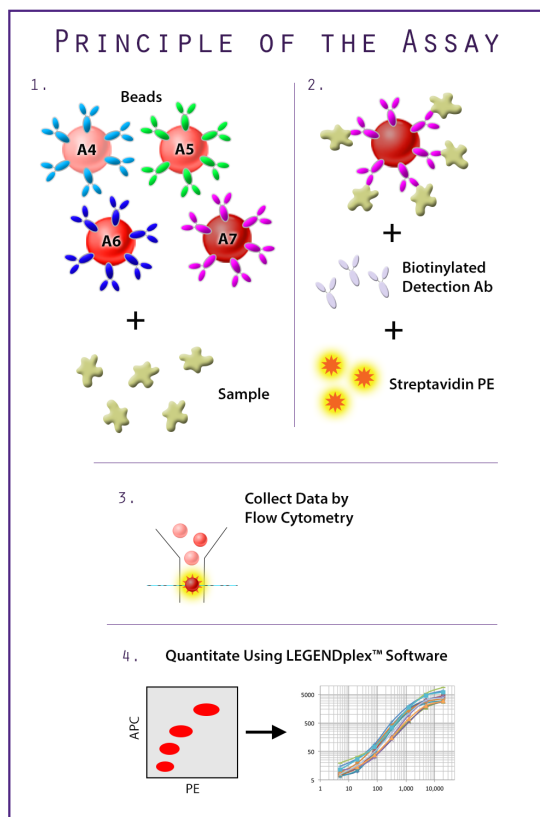
LEGENDplex™ bead-based immunoassays quantitate up to 13 targets simultaneously from one small sample volume. These assays are based on the same scientific principle as sandwich ELISAs:

Capture beads, which are differentiated by size and internal APC fluorescence intensity, are conjugated to antibodies specific to a given biomarker target.

Panels of defined capture bead sets are then incubated with biological samples, next a biotinylated detection antibody cocktail is added to form bead-analyte-detection antibody sandwiches.

A streptavidin-PE conjugate is added to bind to the biotinylated detection antibodies, providing a fluorescent signal intensity proportional to the amount of bound analyte.

The PE fluorescence of analyte specific bead regions are quantified using flow cytometry and the concentrations of biomarker targets are determined using the LEGENDplex™ data analysis software.



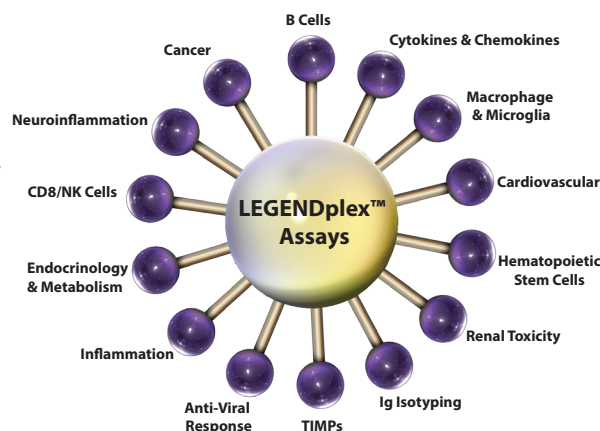
LEGENDplex™ Applications

BioLegend has developed LEGENDplex™ panels for use in a wide variety of research fields in the scientific community.

Each LEGENDplex™ panel is specifically designed to quantitate biomarker targets that are central to a given cell type, biological process, or disease state.

Assays are available in human, non-human primate (NHP), mouse, and rat specificities. Additionally, we are constantly expanding our catalog with new assay content.

To stay updated on these releases, visit: biolegend.com/legendplex



LEGENDplex™ Features & Specifications

LEGENDplex™ assays are compatible with all flow cytometers capable of detecting PE and APC fluorescence, or PE and PerCP in the case of instruments without a red laser.

In addition, free data analysis software is available with the purchase of any assay.

Features	
No. Analytes per assay	1 to 13
Min. volume	12.5 µL serum/plasma 25 µL TC supernatants
Cytometer Requirements	PE & APC detection (PerCP/FL3 without red laser)
Analysis Software	Free PC, Mac, and cloud versions with assay purchase
Tests/Assay	100 tests

Pre-defined Panels

The pre-defined panels provide all the reagents you'll need to run LEGENDplex™, including the setup beads, capture beads, matrix, detection antibody mix, standard cocktail, buffers, assay plate and plate sealers.

Mix and Match Assays

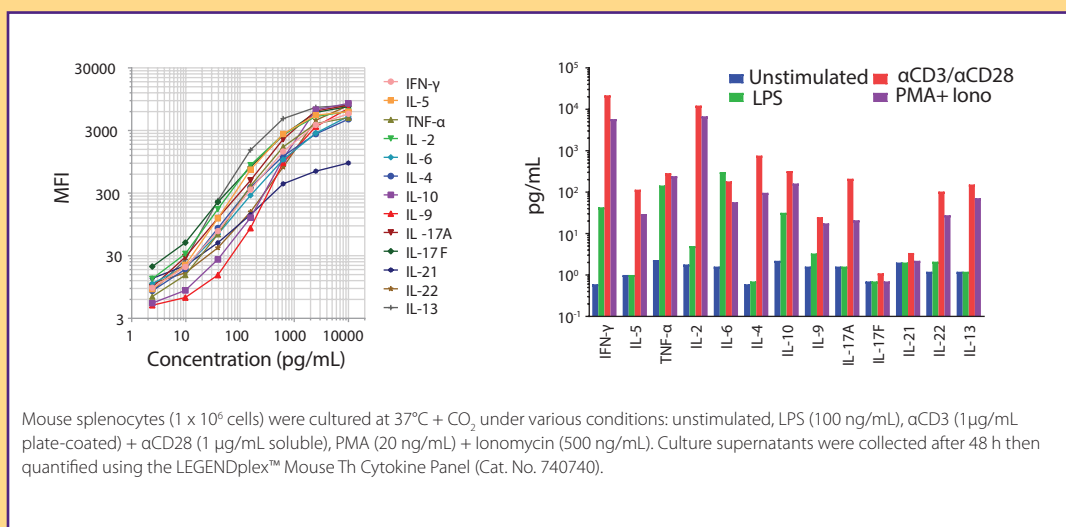
Use the LEGENDplex™ Mix and Match System to order a subset of analyte targets within a pre-defined panel. In order to use this system, you will need to order your desired capture beads, the appropriate buffer set, standard cocktail, detection antibody mix, and assay plate format (filter or V-bottom).

Custom LEGENDplex™ Panels

Want a LEGENDplex™ target that you don't see in our listings? Or, do you want to combine targets from across multiple panels? Talk things over with our experts to get your customized project underway.

E-mail: cst@biolegend.com or call 877-BIOLEGEND to get started!

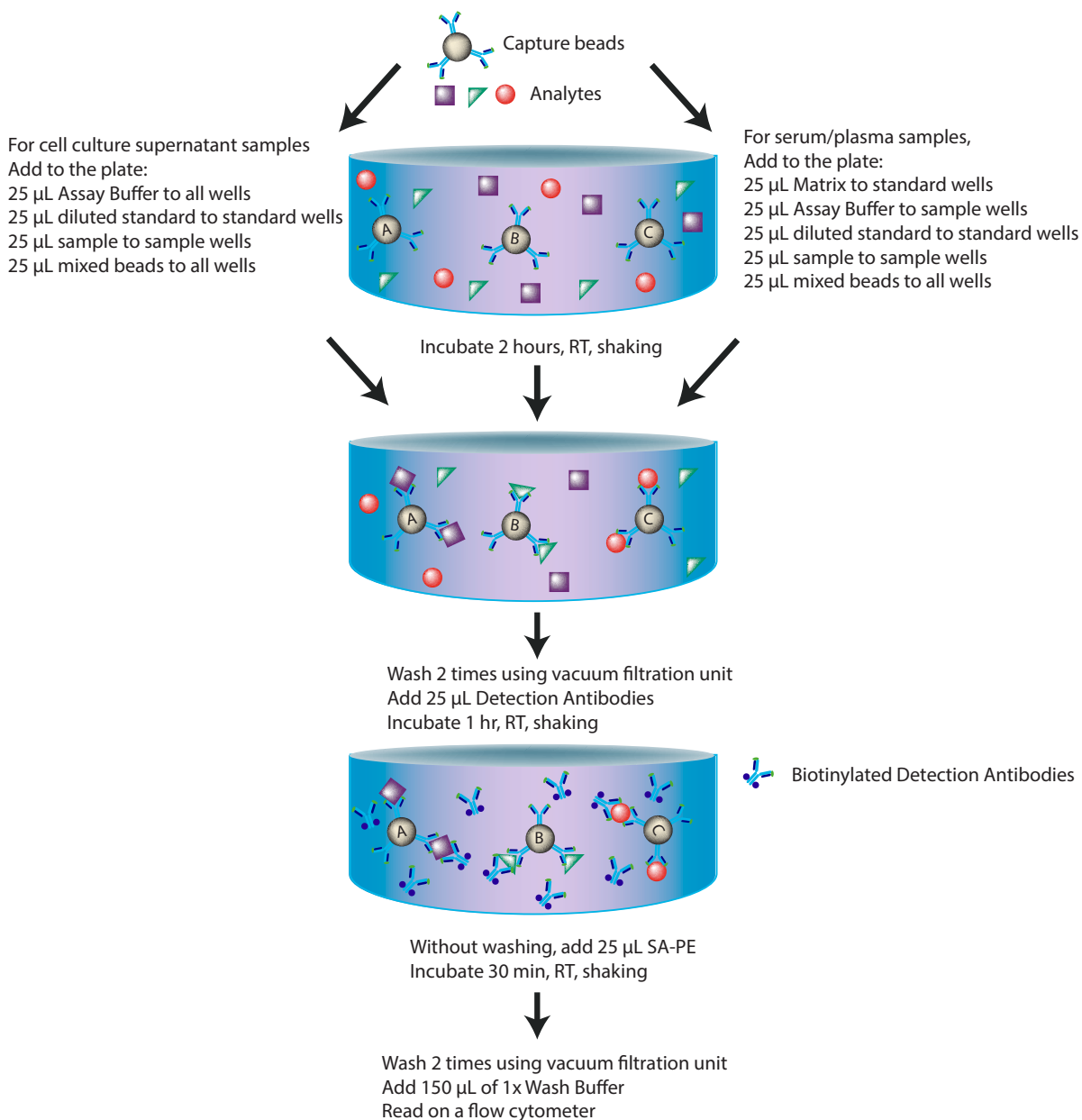
LEGENDplex™ Mouse Th Cytokine Panel Data



Assay Procedure Summary for Filter Plate

Add 100 μ L 1X Wash Buffer to filter plate wells

Vacuum to remove excess buffer



To view a detailed LEGENDplex™ assay protocol on JoVE, visit: [jove.com/video/56440](https://www.jove.com/video/56440)

Human LEGENDplex™ Panels

Human Angiogenesis Panel 1

Pre-defined Panels include ALL required components and ALL check-marked targets			Mix & Match Capture Beads Cat. No.
Filter Plate		Cat. No. 740697	
V-bottom Plate		Cat. No. 740698	
Target	Bead ID	10-plex	
Angiopoietin-1	A5	✓	740701
Angiopoietin-2	A6	✓	740702
CXCL8 (IL-8)	B2	✓	740706
EGF	A7	✓	740703
FGF-basic	A10	✓	740705
IL-6	A4	✓	740597
PECAM-1	B3	✓	740707
PIGF	B4	✓	740708
VEGF	B6	✓	740710
TNF-α	B7	✓	740711
Required Mix and Match Components (already included in Pre-defined Panels)			
Standard		Cat. No. 740699	
Detection Antibodies		Cat. No. 740700	
Buffer Set I		Cat. No. 740623	
Plate Options		Filter Plate: Cat. No. 740377	
		V-bottom Plate: Cat. No. 740379	

Human Vascular Inflammation Panel 2

Pre-defined Panels include ALL required components and ALL check-marked targets					Mix & Match Capture Beads Cat. No.
Filter Plate		Cat. No. 740965	Cat. No. 740977	Cat. No. 740979	
V-bottom Plate		Cat. No. 740966	Cat. No. 740978	Cat. No. 740980	
Target	Bead ID	13-plex	11-plex	2-plex	
sST2	A4	✓	✓		740969
sRAGE	A5	✓	✓		740970
TIE-2	A6	✓		✓	740971
sCD40L	A7	✓	✓		740972
TIE-1	A8	✓		✓	740973
Flt-1	A10	✓	✓		740974
LIGHT	B2	✓	✓		740975
TNF-α	B3	✓	✓		740053
PIGF	B4	✓	✓		740708
IL-6	B5	✓	✓		740206
IL-18	B6	✓	✓		740129
IL-10	B7	✓	✓		740358
CCL2 (MCP-1)	B9	✓	✓		740976
Required Mix and Match Components (already included in Pre-defined Panel)					
Standard			Cat. No. 740967		
Detection Antibodies			Cat. No. 740968		
Buffer Set H			Cat. No. 740620		
Plate Options			Filter Plate: Cat. No. 740377		
			V-bottom Plate: Cat. No. 740379		

Human Vascular Inflammation Panel 1

Pre-defined Panels include ALL required components and ALL check-marked targets							Mix & Match Capture Beads Cat. No.
Filter Plate		Cat. No. 740551	Cat. No. 740589	Cat. No. 740591	Cat. No. 740593	Cat. No. 740595	
V-bottom Plate		Cat. No. 740552	Cat. No. 740590	Cat. No. 740592	Cat. No. 740594	Cat. No. 740596	
Target	Bead ID	Tissue Culture	Serum/Plasma	CRP	Urine	Urine	
CRP	A7	✓		✓	✓		740558
Cystatin C	B9	✓	✓			✓	740566
ICAM-1	B5	✓	✓		✓		740563
IGFBP-4	B4	✓	✓		✓		740476
MMP-2	A8	✓	✓		✓		740559
MMP-9	B7	✓	✓		✓		740565
MPO	B2	✓	✓		✓		740561
MRP8/14	A5	✓	✓			✓	740556
Myoglobin	A4	✓	✓		✓		740555
NGAL	A6	✓	✓		✓		740557
OPN	A10	✓	✓			✓	740560
SAA	B3	✓	✓		✓		740562
VCAM-1	B6	✓	✓		✓		740564
Required Mix and Match Components (already included in Pre-defined Panel)							
Standard						Cat. No. 740554	
Detection Antibodies						Cat. No. 740553	
Buffer Set C						Cat. No. 740374	
Plate Options						Filter Plate: Cat. No. 740377	
						V-bottom Plate: Cat. No. 740379	

Human Fibrinolysis Panel

Pre-defined Panels include ALL required components and ALL check-marked targets			Mix & Match Capture Beads Cat. No.
Filter Plate		Cat. No. 740760	
V-bottom Plate		Cat. No. 740761	
Target	Bead ID	5-plex	
Anti-thrombin	A5	✓	740765
Factor XIII	B5	✓	740768
Fibrinogen	A4	✓	740764
Plasminogen	A6	✓	740766
Prothrombin	B2	✓	740767
Required Mix and Match Components (already included in Pre-defined Panels)			
Standard		Cat. No. 740762	
Detection Antibodies		Cat. No. 740763	
Buffer Set D		Cat. No. 740375	
Plate Options		Filter Plate: Cat. No. 740377	
		V-bottom Plate: Cat. No. 740379	

Human Thrombosis Panels

Pre-defined Panels include ALL required components and ALL check-marked targets					Mix & Match Capture Beads Cat. No.
Filter Plate		Cat. No. 740891	Cat. No. 740905	Cat. No. 740907	
V-bottom Plate		Cat. No. 740892	Cat. No. 740906	Cat. No. 740908	
Target	Bead ID	10-plex	7-plex	3-plex	
IL-6	A4	✓		✓	740597
P-selectin	A5	✓	✓		740896
D-Dimer	A6	✓	✓		740897
PSGL-1	A7	✓	✓		740898
tPA	A10	✓	✓		740899
sCD40L	B2	✓	✓		740900
PAI-1	B4	✓	✓		740901
Tissue Factor	B5	✓		✓	740902
Factor IX	B6		✓		740903
CXCL8 (IL-8)	B7	✓		✓	740904
Required Mix and Match Components (already included in Pre-defined Panel)					
Standard			Cat. No. 740894		
Detection Antibodies			Cat. No. 740895		
Buffer Set L			Cat. No. 740893		
Plate Options			Filter Plate: Cat. No. 740377		
			V-bottom Plate: Cat. No. 740379		

Human LEGENDplex™ Panels

Human Adhesion Molecule Panel

Pre-defined Panels include ALL required components and ALL check-marked targets			Mix & Match Capture Beads Cat. No.
Filter Plate		Cat. No. 740945	
V-bottom Plate		Cat. No. 740946	
Target	Bead ID	13-plex	
ALCAM	A10	✓	740953
CD44	A4	✓	740949
EpCAM	B6	✓	740958
E-selectin	B3	✓	740955
ICAM-1	A5	✓	740950
ICAM-2	A6	✓	740951
ICAM-3	B7	✓	740959
L-selectin	B9	✓	740960
NCAM	A8	✓	740952
PECAM-1	B4	✓	740956
P-selectin	B5	✓	740957
PSGL-1	A7	✓	740898
VCAM-1	B2	✓	740954
Required Mix and Match Components (already included in Pre-defined Panels)			
Standard		Cat. No. 740948	
Detection Antibodies		Cat. No. 740947	
Buffer Set G		Cat. No. 740539	
Plate Options		Filter Plate: Cat. No. 740377	
		V-bottom Plate: Cat. No. 740379	

Human TIMP Panel

Pre-defined Panels include ALL Capture Beads and ALL required components		Mix & Match Capture Beads Cat. No.	
Filter Plate	Cat. No. 740479		
V-bottom Plate	Cat. No. 740480		
Target	Bead ID		
TIMP-1	B9		740483
TIMP-2	B7		740484
TIMP-3	A5		740485
Required Mix and Match Components (already included in Pre-defined Panel)			
Standard	Cat. No. 740841		
Detection Antibodies	Cat. No. 740842		
Buffer Set C	Cat. No. 740374		
Plate Options	Filter Plate: Cat. No. 740377		
	V-bottom Plate: Cat. No. 740379		

Human B Cell Panels

Pre-defined Panels include ALL required components and ALL check-marked targets							Mix & Match Capture Beads Cat. No.
Filter Plate		Cat. No. 740526	Cat. No. 740528	Cat. No. 740530	Cat. No. 740532	Cat. No. 740534	
V-bottom Plate		Cat. No. 740527	Cat. No. 740529	Cat. No. 740531	Cat. No. 740533	Cat. No. 740535	
Target	Bead ID	B Cell	B Effector 1 (Be1)	B Effector 2 (Be2)	B Effector 1/2 (Be1/2)	B Cell Activator	
APRIL	B6	✓				✓	740548
BAFF	B7	✓				✓	740549
CD40L	B9	✓				✓	740550
IFN-γ	B3	✓	✓		✓		740545
IL-2	A10	✓		✓	✓		740543
IL-4	A6	✓		✓	✓		740540
IL-6	A8	✓		✓	✓		740542
IL-10	A7	✓					740541
IL-12p70	B5	✓	✓		✓		740547
IL-13	A5	✓		✓	✓		740047
IL-17A	B4	✓			✓		740546
TNF-α	A4	✓	✓	✓	✓		740538
TNF-β	B2	✓	✓		✓		740544
Required Mix and Match Components (already included in Pre-defined Panel)							
Standard						Cat. No. 740537	
Detection Antibodies						Cat. No. 740536	
Buffer Set A1						Cat. No. 740525	
Plate Options						Filter Plate: Cat. No. 740377	
						V-bottom Plate: Cat. No. 740379	

Human Immunoglobulin Isotyping Panels

Pre-defined Panels include ALL required components and ALL check-marked targets							Mix & Match Capture Beads Cat. No.
Filter Plate		Cat. No. 740637	Cat. No. 740639	Cat. No. 740714	Cat. No. 740641	Cat. No. 740508	
V-bottom Plate		Cat. No. 740638	Cat. No. 740640	Cat. No. 740715	Cat. No. 740642	Cat. No. 740509	
Target	Bead ID	8-plex	6-plex	IgGs	IgE	IgD	
IgA	B4	✓	✓				740652
IgD	B6	✓				✓	740654
IgE	A7	✓			✓		740650
IgG1	A4	✓	✓	✓			740647
IgG2	A5	✓	✓	✓			740648
IgG3	A6	✓	✓	✓			740649
IgG4	B3	✓	✓	✓			740651
IgM	B5	✓	✓				740653
Required Mix and Match Components (already included in Pre-defined Panel)							
Standard						Cat. No. 740646	
Detection Antibodies						Cat. No. 740645	
Buffer Set K						Cat. No. 740713	
Plate Options						Filter Plate: Cat. No. 740377	
						V-bottom Plate: Cat. No. 740379	

Human CD8/NK Cell Panel (Includes Filter Plate)

Pre-defined Panel Cat. No. 740267: includes ALL 13 Capture Beads and ALL required components		Mix & Match Capture Beads Cat. No.
Target	Bead ID	
Granulysin	B9	740280
Granzyme A	B5	740277
Granzyme B	B6	740278
sFas	B2	740274
sFasL	B3	740275
IFN-γ	B4	740276
IL-2	A4	740268
IL-4	A5	740269
IL-6	A7	740044
IL-10	A6	740270
IL-17A	A8	740272
Perforin	B7	740279
TNF-α	A10	740273
Required Mix and Match Components (already included in Pre-defined Panel)		
Standard	Cat. No. 740281	
Detection Antibodies	Cat. No. 740282	
Buffer Set A	Cat. No. 740368	
Plate Options	Filter Plate: Cat. No. 740377	
	V-bottom Plate: Cat. No. 740379	

Human Cytokine Panel 2 (Includes Filter Plate)

Pre-defined Panel Cat. No. 740102: Includes ALL 13 Capture Beads and ALL required components		Mix & Match Capture Beads Cat. No.
Target	Bead ID	
GM-CSF	A7	740106
IFN-α	A8	740107
IL-1α	A5	740104
IL-1β	A6	740105
IL-11	B6	740113
IL-12 (p40)	B2	740109
IL-12 (p70)	B3	740110
IL-15	B4	740111
IL-18	B5	740112
IL-23	A10	740108
IL-27	B7	740114
IL-33	B9	740115
TSLP	A4	740103
Required Mix and Match Components (already included in Pre-defined Panel)		
Standard	Cat. No. 740117	
Detection Antibodies	Cat. No. 740116	
Buffer Set A	Cat. No. 740368	
Plate Options	Filter Plate: Cat. No. 740377	
	V-bottom Plate: Cat. No. 740379	

Human Anti-Virus Response Panels

Pre-defined Panels include ALL required components and ALL check-marked targets				Mix & Match Capture Beads Cat. No.
Filter Plate		Cat. No. 740349	Cat. No. 740350	
V-bottom Plate		Cat. No. 740390	Cat. No. 740396	
Target	Bead ID	Anti-Virus Response Panel	Type 1/2/3 Interferon Panel	
CXCL10 (IP-10)	A7	✓		740363
GM-CSF	B5	✓		740362
IFN-α2	B3	✓	✓	740351
IFN-β	B6	✓	✓	740353
IFN-γ	B9	✓	✓	740352
IFN-λ1	A8	✓	✓	740354
IFN-λ2/3	B4	✓	✓	740355
IL-1β	A4	✓		740119
IL-6	A5	✓		740356
IL-8	A10	✓		740357
IL-10	B7	✓		740358
IL-12 (p70)	B2	✓		740361
TNF-α	A6	✓		740359
Required Mix and Match Components (already included in Pre-defined Panel)				
Standard		Cat. No. 740365		
Detection Antibodies		Cat. No. 740364		
Buffer Set A		Cat. No. 740368		
Plate Options		Filter Plate: Cat. No. 740377		
		V-bottom Plate: Cat. No. 740379		

Human/NHP Free Active/Total TGF-β1 Panel*

Pre-defined Panels include ALL Capture Beads and ALL required components		Mix & Match Capture Beads Cat. No.
Filter Plate	Cat. No. 740449	
V-bottom Plate	Cat. No. 740450	
Target	Bead ID	
TGF-β1	A6	740488
Required Mix and Match Components (already included in Pre-defined Panel)		
Standard	Cat. No. 740486	
Detection Antibodies	Cat. No. 740487	
Buffer Set E	Cat. No. 740437	
Plate Options	Filter Plate: Cat. No. 740377	
	V-bottom Plate: Cat. No. 740379	

* The assay is able to detect free active TGF-β1 without sample treatment or total TGF-β1 after sample treatment.

Human Inflammation Panel 1

Pre-defined Panels include ALL required components and ALL check-marked targets			Mix & Match Capture Beads Cat. No.
Filter Plate		Cat. No. 740808	
V-bottom Plate		Cat. No. 740809	
Target	Bead ID	13-plex	
CCL2 (MCP-1)	A8	✓	740813
IFN-α2	A5	✓	740120
IFN-γ	A6	✓	740121
IL-1β	A4	✓	740812
IL-6	A10	✓	740124
IL-8	B2	✓	740125
IL-10	B3	✓	740126
IL-12 (p70)	B4	✓	740127
IL-17A	B5	✓	740815
IL-18	B6	✓	740129
IL-23	B7	✓	740816
IL-33	B9	✓	740817
TNF-α	A7	✓	740122
Required Mix and Match Components (already included in Pre-defined Panels)			
Standard		Cat. No. 740811	
Detection Antibodies		Cat. No. 740810	
Buffer Set A		Cat. No. 740368	
Plate Options		Filter Plate: Cat. No. 740377	
		V-bottom Plate: Cat. No. 740379	

Human Inflammation Panel 2

Pre-defined Panels include ALL required components and ALL check-marked targets					Mix & Match Capture Beads Cat. No.
Filter Plate		Cat. No. 740775	Cat. No. 740883	Cat. No. 740885	
V-bottom Plate		Cat. No. 740776	Cat. No. 740884	Cat. No. 740886	
Target	Bead ID	TC	S/P (11-plex)	S/P (2-plex)	
CXCL12 (SDF-1)	B2	✓	✓		740785
CX3CL1 (Fractalkine)	B7	✓	✓		740790
Free Active TGF-β1	A4	✓	✓		740779
PAI-1	A5	✓		✓	740780
PTX3	A7	✓	✓		740782
sCD25 (IL-2Ra)	A10	✓	✓		740784
sCD40L	A8	✓	✓		740783
sCD130 (gp130)	B9	✓		✓	740791
sRAGE	B6	✓	✓		740789
sST2	B3	✓	✓		740786
sTNF-RI	B4	✓	✓		740787
sTNF-RII	B5	✓	✓		740788
sTREM-1	A6	✓	✓		740781
Required Mix and Match Components (already included in Pre-defined Panel)					
Standard			Cat. No. 740778		
Detection Antibodies			Cat. No. 740777		
Buffer Set H			Cat. No. 740620		
Plate Options			Filter Plate: Cat. No. 740377		
			V-bottom Plate: Cat. No. 740379		

Human LEGENDplex™ Panels

Human Macrophage/Microglia Panels

Pre-defined Panels include ALL required components and ALL check-marked targets						Mix & Match Capture Beads Cat. No.
Filter Plate		Cat. No. 740502	Cat. No. 740504	Cat. No. 740506	Cat. No. 740508	
V-bottom Plate		Cat. No. 740503	Cat. No. 740505	Cat. No. 740507	Cat. No. 740509	
Target	Bead ID	Macrophage/Microglia	M1 Macrophage	M2 Macrophage	M1/M2 Macrophage	
Arginase	B2	✓		✓		740518
CCL17 (TARC)	B3	✓		✓	✓	740519
CXCL10 (IP-10)	B9	✓	✓		✓	740524
IFN-γ	B7	✓	✓			740523
IL-1β	A10	✓	✓		✓	740517
IL-1RA	B4	✓			✓	740520
IL-4	A7	✓		✓		740515
IL-6	A6	✓	✓	✓	✓	740514
IL-10	A8	✓		✓	✓	740516
IL-12p40	B5	✓	✓		✓	740521
IL-12p70	A4	✓	✓		✓	740512
IL-23	B6	✓	✓		✓	740522
TNF-α	A5	✓	✓		✓	740513
Required Mix and Match Components (already included in Pre-defined Panel)						
Standard					Cat. No. 740511	
Detection Antibodies					Cat. No. 740510	
Buffer Set A1					Cat. No. 740525	
Plate Options					Filter Plate: Cat. No. 740377	
					V-bottom Plate: Cat. No. 740379	

Human T Helper Cytokine Panels

Pre-defined Panels include ALL required components and ALL check-marked targets										Mix & Match Capture Beads Cat. No.
Filter Plate		Cat. No. 740721	Cat. No. 740723	Cat. No. 740725	Cat. No. 740729	Cat. No. 740727	Cat. No. 740731	Cat. No. 740733	Cat. No. 740735	
V-bottom Plate		Cat. No. 740722	Cat. No. 740724	Cat. No. 740726	Cat. No. 740730	Cat. No. 740728	Cat. No. 740732	Cat. No. 740734	Cat. No. 740736	
Target	Bead ID	Th	Th1	Th2	Th1/Th2	Th17	Th9	Th22	Tfh	
IFN-γ	B2	✓	✓		✓	✓				740052
IL-2	A6	✓	✓		✓					740717
IL-4	B6	✓		✓	✓					740042
IL-5	A4	✓		✓	✓					740043
IL-6	A7	✓	✓	✓	✓	✓		✓	✓	740044
IL-9	A8	✓					✓			740045
IL-10	A10	✓	✓	✓	✓	✓	✓	✓	✓	740046
IL-13	A5	✓		✓	✓					740047
IL-17A	B4	✓				✓				740546
IL-17F	B5	✓				✓				740718
IL-21	B7	✓				✓			✓	740719
IL-22	B9	✓				✓		✓		740720
TNF-α	B3	✓	✓	✓	✓	✓	✓	✓	✓	740053
Required Mix and Match Components (already included in Pre-defined Panels)										
Standard									Cat. No. 740759	
Detection Antibodies									Cat. No. 740758	
Buffer Set A									Cat. No. 740368	
Plate Options									Filter Plate: Cat. No. 740377	
									V-bottom Plate: Cat. No. 740379	

Human Neuroinflammation Panel 1

Pre-defined Panels include ALL required components and ALL check-marked targets			Mix & Match Capture Beads Cat. No.
Filter Plate		Cat. No. 740795	
V-bottom Plate		Cat. No. 740796	
Target	Bead ID	13-plex	
β-NGF	B4	✓	740802
BDNF	A7	✓	740797
CCL2 (MCP-1)	A5	✓	740793
CX3CL1	B9	✓	740805
IL-6	B2	✓	740800
IL-18	B5	✓	740112
sRAGE	B7	✓	740804
sTREM-1	B3	✓	740801
sTREM-2	A6	✓	740794
TGF-β1	A8	✓	740798
TNF-α	B6	✓	740803
VEGF	A10	✓	740799
VILIP-1	A4	✓	740792
Required Mix and Match Components (already included in Pre-defined Panels)			
Standard		Cat. No. 740811	
Detection Antibodies		Cat. No. 740806	
Buffer Set A		Cat. No. 740368	
Plate Options		Filter Plate: Cat. No. 740377	
		V-bottom Plate: Cat. No. 740379	

Human Proinflammatory Chemokine Panel (Includes Filter Plate)

Pre-defined Panel Cat. No. 740003: includes ALL 13 Capture Beads and ALL required components		Mix & Match Capture Beads Cat. No.
Target	Bead ID	
CCL2 (MCP-1)	A8	740076
CCL3 (MIP-1α)	B2	740077
CCL4 (MIP-1β)	B9	740078
CCL5 (RANTES)	A10	740079
CCL11 (Eotaxin)	A6	740080
CCL17 (TARC)	A7	740081
CCL20 (MIP-3α)	B5	740082
CXCL1 (GROα)	B6	740083
CXCL5 (ENA-78)	B4	740084
CXCL8 (IL-8)	A4	740085
CXCL9 (MIG)	B3	740086
CXCL10 (IP-10)	A5	740087
CXCL11 (I-TAC)	B7	740088
Required Mix and Match Components (already included in Pre-defined Panel)		
Standard		Cat. No. 740398
Detection Antibodies		Cat. No. 740072
Buffer Set A		Cat. No. 740368
Plate Options		Filter Plate: Cat. No. 740377
		V-bottom Plate: Cat. No. 740379

Human Immune Checkpoint Panel 1

Pre-defined Panels include ALL required components and ALL check-marked targets					Mix & Match Capture Beads Cat. No.
Filter Plate		Cat. No. 740866	Cat. No. 740961	Cat. No. 740963	
V-bottom Plate		Cat. No. 740867	Cat. No. 740962	Cat. No. 740964	
Target	Bead ID	TC (12-plex)	S/P (10-plex)	S/P (2-plex)	
4-1BB	A6	✓	✓		740872
B7.2 (CD86)	A8	✓	✓		740874
CTLA-4	B2	✓	✓		740876
Galectin-9	B9	✓	✓		740882
LAG-3	B7	✓	✓		740881
PD-1	B5	✓	✓		740879
PD-L1	B3	✓	✓		740877
PD-L2	B4	✓		✓	740878
sCD25 (IL-2Ra)	A4	✓	✓		740870
sCD27	A7	✓		✓	740873
TGF-β1 (Free Active)	A10	✓	✓		740875
Tim-3	B6	✓	✓		740880
Required Mix and Match Components (already included in Pre-defined Panel)					
Standard		Cat. No. 740869			
Detection Antibodies		Cat. No. 740868			
Buffer Set M		Cat. No. 740981			
Plate Options		Filter Plate: Cat. No. 740377			
		V-bottom Plate: Cat. No. 740379			

Human Adipokine Panel* (Includes Filter Plate)

Pre-defined Panel Cat. No. 740196: includes ALL 13 Capture Beads and ALL required components		Mix & Match Capture Beads Cat. No.
Target	Bead ID	
Adiponectin	A4	740197
Adipsin	A5	740198
CCL2 (MCP-1)	A7	740200
CXCL10 (IP-10)	A10	740202
IFN-γ	B6	740207
IL-1β	A8	740201
IL-6	B5	740206
IL-8	B3	740204
IL-10	B2	740203
Leptin	B4	740205
RBP4	A6	740199
Resistin	B7	740208
TNF-α	B9	740209
Required Mix and Match Components (already included in Pre-defined Panel)		
Standard		Cat. No. 740210
Detection Antibodies		Cat. No. 740211
Buffer Set C		Cat. No. 740374
Plate Options		Filter Plate: Cat. No. 740377
		V-bottom Plate: Cat. No. 740379

*The Human Adipokine panel is not suitable for serum/plasma samples due to different sample dilution requirements for different analytes. If you need to measure serum/plasma samples for these analytes, please use Human Metabolic Panel 1 and Human Inflammation panels.

Human Hematopoietic Stem Cell Panels

Pre-defined Panels include ALL required components and ALL check-marked targets						Mix & Match Capture Beads Cat. No.
Filter Plate		Cat. No. 740610	Cat. No. 740612	Cat. No. 740614	Cat. No. 740616	
V-bottom Plate		Cat. No. 740611	Cat. No. 740613	Cat. No. 740615	Cat. No. 740617	
Target	Bead ID	HSC	HSC Lymphoid	HSC Erythroid	HSC Myeloid	
CXCL12	B5	✓	✓	✓	✓	740606
FLT3L	A5	✓	✓		✓	740598
GM-CSF	A6	✓		✓	✓	740599
IL-3	A8	✓	✓	✓	✓	740601
IL-6	A4	✓	✓	✓		740597
IL-7	B9	✓	✓			740609
IL-11	B2	✓	✓	✓		740603
IL-15	B6	✓	✓			740607
IL-34	A10	✓			✓	740602
LIF	B4	✓	✓			740605
M-CSF	B7	✓			✓	740608
SCF	B3	✓	✓	✓	✓	740604
Required Mix and Match Components (already included in Pre-defined Panel)						
Standard		Cat. No. 740619				
Detection Antibodies		Cat. No. 740618				
Buffer Set H		Cat. No. 740620				
Plate Options		Filter Plate: Cat. No. 740377				
		V-bottom Plate: Cat. No. 740379				

Human Acute Phase Panel 1

Pre-defined Panels include ALL required components and ALL check-marked targets			Mix & Match Capture Beads Cat. No.
Filter Plate		Cat. No. 740999	
V-bottom Plate		Cat. No. 741000	
Target	Bead ID	HSC	
α2-macroglobulin	A4	✓	741004
α1-AGP	A5	✓	741005
Haptoglobin	A7	✓	741006
α1-antitrypsin	A10	✓	741007
Ceruloplasmin	B3	✓	741008
Fibrinogen	B4	✓	741009
Prothrombin	B5	✓	741010
SAP	B7	✓	741011
Required Mix and Match Components (already included in Pre-defined Panels)			
Standard		Cat. No. 741002	
Detection Antibodies		Cat. No. 741001	
Buffer Set N		Cat. No. 741003	
Plate Options		Filter Plate: Cat. No. 740377	
		V-bottom Plate: Cat. No. 740379	

Human Diabetesy Panels

Pre-defined Panels include ALL required components and ALL check-marked targets					Mix & Match Capture Beads Cat. No.
Filter Plate		Cat. No. 740909	Cat. No. 740911	Cat. No. 740913	
V-bottom Plate		Cat. No. 740910	Cat. No. 740912	Cat. No. 740914	
Target	Bead ID	TC (11-plex)	S/P (7-plex)	S/P (4-plex)	
Cortisol	B5	✓		✓	740925
C-Peptide	A8	✓	✓		740921
GLP-1 (Active)	B9	✓	✓		740928
GLP-1 (Total)	A5	✓	✓		740919
Glucagon	B3	✓	✓		740923
IL-1β	B6	✓	✓		740699
IL-6	B7	✓	✓		740927
Insulin	A7	✓		✓	740920
Leptin	B4	✓		✓	740205
PAI-1	A4	✓		✓	740918
TNF-α	A10	✓	✓		740273
Required Mix and Match Components (already included in Pre-defined Panel)					
Standard		Cat. No. 740915			
Detection Antibodies		Cat. No. 740916			
Buffer Set A		Cat. No. 740368			
Plate Options		Filter Plate: Cat. No. 740377			
		V-bottom Plate: Cat. No. 740379			

Human LEGENDplex™ Panels

Human Growth Factor Panel (Includes Filter Plate)

Pre-defined Panel Cat. No. 740180: Includes ALL 13 Capture Beads and ALL required components		Mix & Match Capture Beads Cat. No.
Target	Bead ID	
Angiopoietin-2	A4	740181
EGF	A5	740182
EPO	A6	740183
FGF-basic	A7	740184
G-CSF	A8	740185
GM-CSF	A10	740186
HGF	B2	740187
M-CSF	B3	740188
PDGF-AA	B4	740189
PDGF-BB	B5	740190
SCF	B6	740191
TGF-α	B7	740192
VEGF	B9	740193
Required Mix and Match Components (already included in Pre-defined Panel)		
Standard	Cat. No. 740194	
Detection Antibodies	Cat. No. 740195	
Buffer Set A	Cat. No. 740368	
Plate Options	Filter Plate: Cat. No. 740377	
	V-bottom Plate: Cat. No. 740379	

Human IGFBP Panel

Pre-defined Panels include ALL Capture Beads and ALL required components		Mix & Match Capture Beads Cat. No.
Filter Plate	Cat. No. 740468	
V-bottom Plate	Cat. No. 740469	
Target	Bead ID	
IGFALS	B9	740478
IGFBP-1	B5	740477
IGFBP-2	B2	740475
IGFBP-3	A5	740473
IGFBP-4	B4	740476
IGFBP-6	A8	740474
IGFBP-7	A4	740472
Required Mix and Match Components (already included in Pre-defined Panel)		
Standard	Cat. No. 740470	
Detection Antibodies	Cat. No. 740471	
Buffer Set C	Cat. No. 740374	
Plate Options	Filter Plate: Cat. No. 740377	
	V-bottom Plate: Cat. No. 740379	

Human Essential Immune Response Panel

Pre-defined Panels include ALL required components and ALL check-marked targets			Mix & Match Capture Beads Cat. No.
Filter Plate		Cat. No. 740929	
V-bottom Plate		Cat. No. 740930	
Target	Bead ID	13-plex	
IL-4	A4	✓	740933
IL-2	A5	✓	740934
CXCL10 (IP-10)	A6	✓	740935
IL-1β	A7	✓	740936
TNF-α	A8	✓	740937
CCL2 (MCP-1)	A10	✓	740938
IL-17A	B2	✓	740939
IL-6	B3	✓	740940
IL-10	B4	✓	740941
IFN-γ	B5	✓	740942
IL-12p70	B6	✓	740943
CXCL8 (IL-8)	B7	✓	740904
Free Active TGF-β1	B9	✓	740944
Required Mix and Match Components (already included in Pre-defined Panels)			
Standard	Cat. No. 740932		
Detection Antibodies	Cat. No. 740931		
Buffer Set A	Cat. No. 740368		
Plate Options	Filter Plate: Cat. No. 740377		
	V-bottom Plate: Cat. No. 740379		

Human Metabolic Panel 1 (Includes Filter Plate)

Pre-defined Panel Cat. No. 740212: includes ALL 4 Capture Beads and ALL required components		Mix & Match Capture Beads Cat. No.
Target	Bead ID	
Adiponectin	A4	740197
Adipsin	A5	740198
Leptin	B4	740205
Resistin	B7	740208
Required Mix and Match Components (already included in Pre-defined Panel)		
Standard	Cat. No. 740213	
Detection Antibodies	Cat. No. 740214	
Buffer Set D	Cat. No. 740375	
Plate Options	Filter Plate: Cat. No. 740377	
	V-bottom Plate: Cat. No. 740379	

Human Kidney Function Panel 1, For Urine Samples

Pre-defined Panels include ALL Capture Beads and ALL required components		Mix & Match Capture Beads Cat. No.
Filter Plate	Cat. No. 740577	
V-bottom Plate	Cat. No. 740578	
Target	Bead ID	
β2-microglobulin	A5	740567
Albumin	B3	740571
Clusterin	A7	740569
Cystatin C	A6	740568
EGF	A8	740570
IGFBP-7	A4	740472
OPN	B4	740572
TFF3	B7	740573
Uromodulin	B9	740574
Required Mix and Match Components (already included in Pre-defined Panel)		
Standard	Cat. No. 740580	
Detection Antibodies	Cat. No. 740579	
Buffer Set G	Cat. No. 740539	
Plate Options	Filter Plate: Cat. No. 740377	
	V-bottom Plate: Cat. No. 740379	

Human Kidney Function Panel 2, For Serum/Plasma Samples

Pre-defined Panels include ALL Capture Beads and ALL required components		Mix & Match Capture Beads Cat. No.
Filter Plate	Cat. No. 740581	
V-bottom Plate	Cat. No. 740582	
Target	Bead ID	
Cystatin C	A6	740568
IGFBP-7	A4	740472
NGAL	A5	740575
OPN	B4	740572
TFF3	B7	740573
TIMP-2	A8	740576
Uromodulin	B9	740574
Required Mix and Match Components (already included in Pre-defined Panel)		
Standard	Cat. No. 740584	
Detection Antibodies	Cat. No. 740583	
Buffer Set G	Cat. No. 740539	
Plate Options	Filter Plate: Cat. No. 740377	
	V-bottom Plate: Cat. No. 740379	

Human Kidney Function Panel 3, For Urine/Plasma/Serum Samples

Pre-defined Panels include ALL Capture Beads and ALL required components		Mix & Match Capture Beads Cat. No.
Filter Plate	Cat. No. 740585	
V-bottom Plate	Cat. No. 740586	
Target	Bead ID	
Cystatin C	A6	740568
IGFBP-7	A4	740472
OPN	B4	740572
TFF3	B7	740573
Uromodulin	B9	740574
Required Mix and Match Components (already included in Pre-defined Panel)		
Standard	Cat. No. 740588	
Detection Antibodies	Cat. No. 740587	
Buffer Set G	Cat. No. 740539	
Plate Options	Filter Plate: Cat. No. 740377	
	V-bottom Plate: Cat. No. 740379	

Human Apolipoprotein (Apo) Panel

Pre-defined Panels include ALL Capture Beads and ALL required components		Mix & Match Capture Beads Cat. No.
Filter Plate	Cat. No. 740453	
V-bottom Plate	Cat. No. 740454	
Target	Bead ID	
Apo AI	A4	740457
Apo AI	A5	740458
Apo B100	A6	740459
Apo CII	A7	740460
Apo CIII	A10	740461
Apo D	B3	740462
Apo E	B4	740463
Apo E4	B5	740464
Apo H	B6	740465
Apo J	B7	740466
Apo M	B9	740467
Required Mix and Match Components (already included in Pre-defined Panel)		
Standard	Cat. No. 740455	
Detection Antibodies	Cat. No. 740456	
Buffer Set D	Cat. No. 740375	
Plate Options	Filter Plate: Cat. No. 740377	
	V-bottom Plate: Cat. No. 740379	

Mouse LEGENDplex™ Panels

Mouse Anti-Virus Response Panels

Pre-defined Panels include ALL required components and ALL check-marked targets				Mix & Match Capture Beads Cat. No.
Filter Plate		Cat. No. 740621	Cat. No. 740635	
V-bottom Plate		Cat. No. 740622	Cat. No. 740636	
Target	Bead ID	Anti-Virus Response Panel	Type 1/2/3 Interferon Panel	
CCL2 (MCP-1)	A7	✓		740627
CCL5 (RANTES)	A10	✓		740628
CXCL1 (KC)	A5	✓		740626
CXCL10 (IP-10)	B3	✓		740630
GM-CSF	B4	✓		740631
IFN-α	B7	✓	✓	740633
IFN-β	B6	✓	✓	740145
IFN-γ	A4	✓	✓	740065
IL-1β	B2	✓		740157
IL-6	B9	✓		740634
IL-10	B5	✓		740632
IL-12p70	A8	✓		740139
TNF-α	A6	✓		740066
Required Mix and Match Components (already included in Pre-defined Panel)				
Standard		Cat. No. 740624		
Detection Antibodies		Cat. No. 740625		
Buffer Set A		Cat. No. 740623		
Plate Options		Filter Plate: Cat. No. 740377		
		V-bottom Plate: Cat. No. 740379		

Mouse Cytokine Panel 2 (Includes Filter Plate)

Pre-defined Panel Cat. No. 740134: Includes ALL 13 Capture Beads and ALL required components		Mix & Match Capture Beads Cat. No.
Target	Bead ID	
GM-CSF	B7	
IFN-β	B6	
IL-1α	A4	740135
IL-1β	A5	740136
IL-3	A6	740137
IL-7	B2	740141
IL-11	B3	740142
IL-12 (p40)	A7	740138
IL-12 (p70)	A8	740139
IL-23	A10	740140
IL-27	B4	740143
IL-33	B5	740144
TSLP	B9	740147
Required Mix and Match Components (already included in Pre-defined Panel)		
Standard		Cat. No. 740372
Detection Antibodies		Cat. No. 740149
Buffer Set B		Cat. No. 740373
Plate Options		Filter Plate: Cat. No. 740377
		V-bottom Plate: Cat. No. 740379

Mouse/Rat Free Active/Total TGF-β1 Panel*

Pre-defined Panel includes either V-bottom (Cat. No. 740490) or Filter Plate (Cat. No. 740489), 1 Capture Beads, and ALL required components		Mix & Match Capture Beads Cat. No.
Target	Bead ID	
TGF-β1	A6	
Required Mix and Match Components (already included in Pre-defined Panel)		
Standard		Cat. No. 740486
Detection Antibodies		Cat. No. 740487
Buffer Set F		Cat. No. 740491
Plate Options		Filter Plate: Cat. No. 740377
		V-bottom Plate: Cat. No. 740379

* The assay is able to detect free active TGF-β1 without sample treatment or total TGF-β1 after sample treatment.

Mouse IgE Panel

Pre-defined Panels include ALL required components and ALL check-marked targets			Mix & Match Capture Beads Cat. No.
Filter Plate		Cat. No. 740769	
V-bottom Plate		Cat. No. 740770	
Target	Bead ID	1-plex	
IgE	B5	✓	740773
Required Mix and Match Components (already included in Pre-defined Panels)			
Standard		Cat. No. 740772	
Detection Antibodies		Cat. No. 740771	
Buffer Set C		Cat. No. 740374	
Plate Options		Filter Plate: Cat. No. 740377	
		V-bottom Plate: Cat. No. 740379	

Mouse Immunoglobulin Isotyping Panel

Pre-defined Panel includes either V-bottom (Cat. No. 740493) or Filter Plate (Cat. No. 740492), ALL 6 Capture Beads, and ALL required components		Mix & Match Capture Beads Cat. No.
Target	Bead ID	
IgA	B2	
IgG1	A4	
IgG2a	A5	740497
IgG2b	B4	740498
IgG3	A7	740499
IgM	B3	740501
Required Mix and Match Components (already included in Pre-defined Panel)		
Standard		Cat. No. 740494
Detection Antibodies		Cat. No. 740495
Buffer Set D		Cat. No. 740375
Plate Options		Filter Plate: Cat. No. 740377
		V-bottom Plate: Cat. No. 740379

Mouse Inflammation Panel

Pre-defined Panel includes either V-bottom (Cat. No. 740446) or Filter Plate (Cat. No. 740150), ALL 13 Capture Beads, and ALL required components		Mix & Match Capture Beads Cat. No.
Target	Bead ID	
CCL2 (MCP-1)	A8	
GM-CSF	B9	
IFN-β	B7	740162
IFN-γ	A6	740153
IL-1α	A5	740152
IL-1β	B2	740157
IL-6	B4	740159
IL-10	B3	740158
IL-12 (p70)	A10	740156
IL-17A	B6	740161
IL-23	A4	740151
IL-27	B5	740160
TNF-α	A7	740154
Required Mix and Match Components (already included in Pre-defined Panel)		
Standard		Cat. No. 740371
Detection Antibodies		Cat. No. 740165
Buffer Set B		Cat. No. 740373
Plate Options		Filter Plate: Cat. No. 740377
		V-bottom Plate: Cat. No. 740379

Mouse Macrophage/Microglia Panels

Pre-defined Panels include ALL required components and ALL check-marked targets					Mix & Match Capture Beads Cat. No.
Filter Plate		Cat. No. 740845	Cat. No. 740847	Cat. No. 740849	
V-bottom Plate		Cat. No. 740846	Cat. No. 740848	Cat. No. 740850	
Target	Bead ID	Macrophage/ Microglia	M1 Macrophage	M2 Macrophage	
CCL17 (TARC)	B6	✓		✓	740863
CCL22 (MDC)	A8	✓		✓	740857
CXCL1 (KC)	A4	✓	✓		740853
G-CSF	B5	✓		✓	740862
IL-1β	B9	✓	✓		740865
IL-6	B3	✓	✓	✓	740860
IL-10	A10	✓		✓	740858
IL-12p40	B7	✓	✓		740864
IL-12p70	B2	✓	✓		740859
IL-18	A6	✓	✓		740855
IL-23	A7	✓	✓		740856
TGF-β1	A5	✓		✓	740854
TNF-α	B4	✓	✓		740861
Required Mix and Match Components (already included in Pre-defined Panel)					
Standard				Cat. No. 740852	
Detection Antibodies				Cat. No. 740851	
Buffer Set B				Cat. No. 740373	
Plate Options				Filter Plate: Cat. No. 740377	
				V-bottom Plate: Cat. No. 740379	

Mouse Proinflammatory Chemokine (Includes Filter Plate)

Pre-defined Panel Cat. No. 740007: Includes ALL 13 Capture Beads and ALL required components		Mix & Match Capture Beads Cat. No.
Target	Bead ID	
CCL2 (MCP-1)	A10	740089
CCL3 (MIP-1α)	B4	740090
CCL4 (MIP-1β)	B5	740091
CCL5 (RANTES)	A4	740092
CCL11 (Eotaxin)	A6	740093
CCL17 (TARC)	A7	740094
CCL20 (MIP-3α)	A5	740095
CCL22 (MDC)	B9	740098
CXCL1 (KC)	A8	740096
CXCL5 (LIX)	B7	740097
CXCL9 (MIG)	B2	740099
CXCL10 (IP-10)	B3	740100
CXCL13 (BLC)	B6	740101
Required Mix and Match Components (already included in Pre-defined Panel)		
Standard		Cat. No. 740370
Detection Antibodies		Cat. No. 740074
Buffer Set A		Cat. No. 740368
Plate Options		Filter Plate: Cat. No. 740377
		V-bottom Plate: Cat. No. 740379

Mouse T Helper Cytokine Panels

Pre-defined Panels include ALL required components and ALL check-marked targets										Mix & Match Capture Beads Cat. No.
Filter Plate		Cat. No. 740740	Cat. No. 740744	Cat. No. 740746	Cat. No. 740750	Cat. No. 740748	Cat. No. 740752	Cat. No. 740754	Cat. No. 740756	
V-bottom Plate		Cat. No. 740741	Cat. No. 740745	Cat. No. 740747	Cat. No. 740751	Cat. No. 740749	Cat. No. 740753	Cat. No. 740755	Cat. No. 740757	
Target	Bead ID	Th	Th1	Th2	Th1/Th2	Th17	Th9	Th22	Tfh	
IFN-γ	A4	✓	✓		✓	✓				740065
IL-2	A7	✓	✓		✓					740054
IL-4	A10	✓		✓	✓					740055
IL-5	A5	✓		✓	✓					740056
IL-6	A8	✓	✓	✓	✓	✓		✓	✓	740057
IL-9	B3	✓					✓			740774
IL-10	B2	✓	✓	✓	✓	✓	✓	✓	✓	740059
IL-13	B9	✓		✓	✓					740739
IL-17A	B4	✓				✓				740061
IL-17F	B5	✓				✓				740062
IL-21	B6	✓				✓			✓	740737
IL-22	B7	✓				✓		✓		740738
TNF-α	A6	✓	✓	✓	✓	✓	✓	✓	✓	740066
Required Mix and Match Components (already included in Pre-defined Panels)										
Standard										Cat. No. 740743
Detection Antibodies										Cat. No. 740742
Buffer Set A										Cat. No. 740368
Plate Options										Filter Plate: Cat. No. 740377
										V-bottom Plate: Cat. No. 740379

Mouse Hematopoietic Stem Cell Panels

Pre-defined Panels include ALL required components and ALL check-marked targets						Mix & Match Capture Beads Cat. No.
Filter Plate		Cat. No. 740676	Cat. No. 740678	Cat. No. 740680	Cat. No. 740682	
V-bottom Plate		Cat. No. 740677	Cat. No. 740679	Cat. No. 740681	Cat. No. 740683	
Target	Bead ID	HSC	HSC Lymphoid	HSC Erythroid	HSC Myeloid	
CXCL12 (SDF-1)	B9	✓	✓	✓	✓	740696
EPO	B7	✓		✓		740695
GM-CSF	A10	✓		✓	✓	740689
IL-3	B4	✓	✓			740691
IL-5	A5	✓			✓	740056
IL-6	A8	✓	✓	✓		740057
IL-15	B2	✓	✓			740690
IL-34	A4	✓			✓	740686
LIF	B5	✓	✓			740693
M-CSF	A6	✓			✓	740687
SCF	B6	✓	✓	✓	✓	740694
TGF-β1	B3	✓	✓	✓	✓	740692
TPO	A7	✓		✓		740688
Required Mix and Match Components (already included in Pre-defined Panel)						
Standard					Cat. No. 740684	
Detection Antibodies					Cat. No. 740685	
Buffer Set H					Cat. No. 740620	
Plate Options					Filter Plate: Cat. No. 740377	
					V-bottom Plate: Cat. No. 740379	

Mouse B Cell Panels

Pre-defined Panels include ALL required components and ALL check-marked targets									Mix & Match Capture Beads Cat. No.
Filter Plate		Cat. No. 740818	Cat. No. 740826	Cat. No. 740820	Cat. No. 740822	Cat. No. 740824	Cat. No. 740828	Cat. No. 740982	
V-bottom Plate		Cat. No. 740819	Cat. No. 740827	Cat. No. 740821	Cat. No. 740823	Cat. No. 740825	Cat. No. 740829	Cat. No. 740983	
Target	Bead ID	B Cell	S/P (12-plex)	B Effector 1/2	B Effector 2	B Effector 1	Breg	S/P (1-plex)	
BAFF	B5	✓						✓	740841
BCMA	B6	✓	✓						740842
sCD40L	B7		✓						740843
IFN-γ	B4	✓	✓	✓		✓			740840
IL-2	A8	✓	✓	✓	✓				740836
IL-4	A4	✓	✓	✓	✓				740832
IL-6	A5	✓	✓	✓	✓				740833
IL-10	B9	✓	✓				✓		740844
IL-12p70	A6	✓	✓	✓		✓			740834
IL-13	B3	✓	✓	✓	✓				740839
IL-17A	A7	✓	✓	✓					740835
TNF-α	A10	✓	✓	✓	✓	✓			740837
TGF-β1	B2	✓	✓				✓		740838
Required Mix and Match Components (already included in Pre-defined Panels)									
Standard									Cat. No. 740831
Detection Antibodies									Cat. No. 740830
Buffer Set B									Cat. No. 740373
Plate Options									Filter Plate: Cat. No. 740377
									V-bottom Plate: Cat. No. 740379

Rat LEGENDplex™ Panels

Rat T helper Cytokine Panels *(Includes either Filter Plate or V-bottom plate)*

Pre-defined Panels include ALL required components and ALL check-marked targets											Mix & Match Capture Beads Cat. No.
Filter Plate		Cat. No. 740283	Cat. No. 740284	Cat. No. 740285	Cat. No. 740286	Cat. No. 740287	Cat. No. 740288	Cat. No. 740289	Cat. No. 740290	Cat. No. 740291	
V-bottom Plate		Cat. No. 740402	Cat. No. 740403	Cat. No. 740404	Cat. No. 740405	Cat. No. 740406	Cat. No. 740407	Cat. No. 740408	Cat. No. 740409	Cat. No. 740410	
Target	Bead ID	Th	Th1	Th2	Th1/Th2	Th17	Th9	Th22	Tfh	ThGM	
GM-CSF	A10	✓	✓	✓	✓	✓				✓	740257
IFN-γ	A5	✓	✓		✓	✓			✓	✓	740253
IL-2	A7	✓	✓		✓					✓	740295
IL-4	B2	✓		✓	✓				✓		740297
IL-5	A6	✓		✓	✓						740294
IL-6	B9	✓	✓	✓	✓	✓		✓	✓		740264
IL-9	B4	✓					✓				740299
IL-10	A4	✓	✓	✓	✓	✓	✓	✓	✓	✓	740252
IL-13	B6	✓		✓	✓			✓			740300
IL-17A	B5	✓				✓					740261
IL-17F	B3	✓				✓					740298
IL-22	B7	✓				✓		✓			740301
TNF-α	A8	✓	✓	✓	✓	✓	✓	✓	✓		740256
Required Mix and Match Components (already included in Pre-defined Panels)											
Standard											Cat. No. 740293
Detection Antibodies											Cat. No. 740292
Buffer Set B											Cat. No. 740373
Plate Options											Filter Plate: Cat. No. 740377
											V-bottom Plate: Cat. No. 740379

Rat Inflammation Panel

Pre-defined Panel includes either V-bottom (Cat. No. 740401) or Filter Plate (Cat. No. 740251), ALL 13 Capture Beads, and ALL required components		Mix & Match Capture Beads Cat. No.
Target	Bead ID	
CCL2 (MCP-1)	A7	740255
CXCL1 (KC)	A6	740254
GM-CSF	A10	740257
IFN-γ	A5	740253
IL-1α	B7	740263
IL-1β	B4	740260
IL-6	B9	740264
IL-10	A4	740252
IL-12 p70	B3	740259
IL-17A	B5	740261
IL-18	B2	740258
IL-33	B6	740262
TNF-α	A8	740256
Required Mix and Match Components (already included in Pre-defined Panel)		
Standard		Cat. No. 740265
Detection Antibodies		Cat. No. 740266
Buffer Set B		Cat. No. 740373
Plate Options		Filter Plate: Cat. No. 740377
		V-bottom Plate: Cat. No. 740379

Non-Human Primate LEGENDplex™ Panels

Non-Human Primate T Helper Cytokine Panels *(Includes either Filter Plate or V-bottom plate)*

Pre-defined Panels include ALL required components and ALL check-marked targets								Mix & Match Capture Beads Cat. No.
Filter Plate		Cat. No. 740303	Cat. No. 740381	Cat. No. 740382	Cat. No. 740383	Cat. No. 740384	Cat. No. 740385	
V-bottom Plate		Cat. No. 740387	Cat. No. 740391	Cat. No. 740392	Cat. No. 740393	Cat. No. 740394	Cat. No. 740395	
Target	Bead ID	Th	Th1	Th2	Th1/Th2	Th17	Tfh	
IFN-γ	B3	✓	✓		✓	✓	✓	740310
IL-2	A4	✓	✓		✓			740304
IL-4	B4	✓		✓	✓		✓	740311
IL-5	A5	✓		✓	✓			740305
IL-6	A6	✓	✓	✓	✓	✓	✓	740306
IL-10	A7	✓	✓	✓	✓	✓	✓	740307
IL-13	A10	✓		✓	✓			740308
IL-17A	B5	✓				✓		740312
IL-21	B6	✓				✓	✓	740313
TNF-α	B2	✓	✓	✓	✓	✓	✓	740309
Required Mix and Match Components (already included in Pre-defined Panels)								
Standard							Cat. No. 740314	
Detection Antibodies							Cat. No. 740315	
Buffer Set A							Cat. No. 740368	
Plate Options							Filter Plate: Cat. No. 740377	
							V-bottom Plate: Cat. No. 740379	

Non-Human Primate Cytokine/Chemokine Panel

Pre-defined Panel includes either V-bottom (Cat. No. 740388) or Filter Plate (Cat. No. 740317), ALL 13 Capture Beads, and ALL required components		Mix & Match Capture Beads Cat. No.
Target	Bead ID	
CCL2 (MCP-1)	A10	740323
CCL3 (MIP-1α)	B3	740324
CCL4 (MIP-1β)	B4	740325
CCL5 (RANTES)	B5	740326
CCL11 (Eotaxin)	A6	740320
CXCL9 (MIG)	B2	740348
CXCL10 (IP-10)	A7	740321
CXCL11 (I-TAC)	A8	740322
IFN-γ	B9	740329
IL-1β	A4	740318
IL-6	A5	740319
IL-8	B6	740327
TNF-α	B7	740328
Required Mix and Match Components (already included in Pre-defined Panel)		
Standard		Cat. No. 740330
Detection Antibodies		Cat. No. 740331
Buffer Set A		Cat. No. 740368
Plate Options		Filter Plate: Cat. No. 740377
		V-bottom Plate: Cat. No. 740379

Non-Human Primate Inflammation Panel

Pre-defined Panel includes either V-bottom (Cat. No. 740389) or Filter Plate (Cat. No. 740332), ALL 13 Capture Beads, and ALL required components		Mix & Match Capture Beads Cat. No.
Target	Bead ID	
CCL2 (MCP-1)	B9	740345
CXCL10 (IP-10)	A6	740335
GM-CSF	B6	740343
IFN-β	B2	740339
IFN-γ	B5	740342
IL-1β	A7	740336
IL-6	A4	740333
IL-8	B7	740344
IL-10	A5	740334
IL-12 (p40)	A8	740337
IL-17A	A10	740338
IL-23	B3	740340
TNF-α	B4	740341
Required Mix and Match Components (already included in Pre-defined Panel)		
Standard		Cat. No. 740346
Detection Antibodies		Cat. No. 740347
Buffer Set A		Cat. No. 740368
Plate Options		Filter Plate: Cat. No. 740377
		V-bottom Plate: Cat. No. 740379

Non-Human Primate Adipokine Panel* *(Includes Filter Plate)*

Pre-defined Panel Cat. No. 740233: Includes ALL 13 Capture Beads and ALL required components		Mix & Match Capture Beads Cat. No.
Target	Bead ID	
Adiponectin	A4	740234
Adipisin	A5	740235
CCL2 (MCP-1)	A7	740237
CXCL10 (IP-10)	A10	740239
IFN-γ	B6	740243
IL-1β	A8	740238
IL-6	B5	740242
IL-8	B3	740240
IL-10	B2	740296
Leptin	B4	740241
RBP4	A6	740236
Resistin	B7	740244
TNF-α	B9	740245
Required Mix and Match Components (already included in Pre-defined Panel)		
Standard		Cat. No. 740246
Detection Antibodies		Cat. No. 740247
Buffer Set C		Cat. No. 740374
Plate Options		Filter Plate: Cat. No. 740377
		V-bottom Plate: Cat. No. 740379

*The NHP Adipokine panel is not suitable for serum/plasma samples due to different sample dilution requirements for different analytes.

Carboxyl Beads (Unconjugated)

Can't find a LEGENDplex™ bead for the target you want? Now you can conjugate your own antibodies to our unconjugated carboxyl beads. Bead IDs are provided so you can fit them appropriately into your LEGENDplex™ panel. If you would like advice regarding the addition of these beads to your panel, talk with us at cst@biolegend.com.

Beads	Cat. No.
A4	740167
A5	740168
A6	740169
A7	740170
A8	740171
A10	740172

Beads	Cat. No.
B2	740173
B3	740174
B4	740175
B5	740176
B6	740177
B7	740178
B9	740179

Streptavidin-PE Reporter Reagent

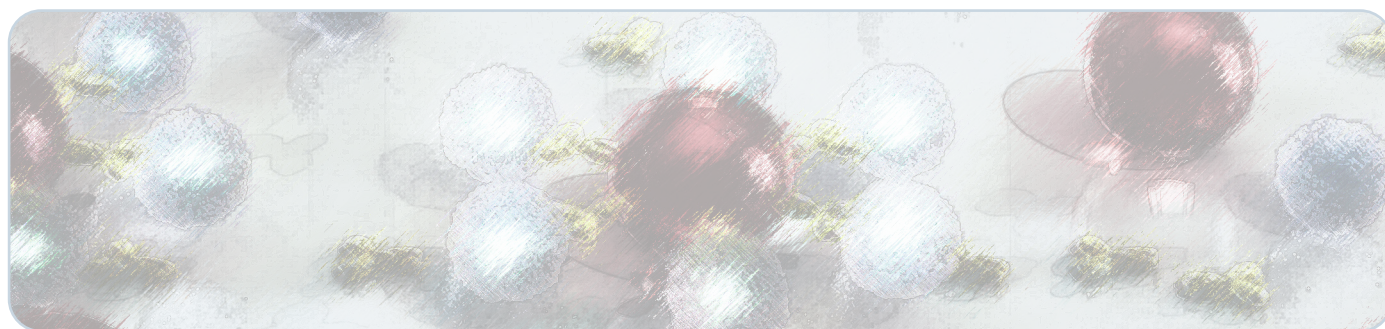
Streptavidin binds to biotin with high affinity. Streptavidin-PE (SA-PE) is useful for detecting biotinylated antibodies. It is used for LEGENDplex™ assays as a reporter reagent. PE can be excited and emit a signal that is detected by a flow cytometer.

Description	Cat. No.
SA-PE	740452

Request a Custom LEGENDplex™ Panel

Want a LEGENDplex™ target that you don't see in our listings? Or, do you want to combine cytokines and chemokines across panels? Talk things over with our experts to get your customized project underway.

E-mail: cst@biolegend.com or
call 877-BIOLEGEND to get started!



BioLegend offers a variety of high quality, cost-effective ELISA kits and sets to measure cytokines, chemokines, and soluble biomarkers consistently and reliably. From our easy-to-use, all-inclusive LEGEND MAX™ kits to our ELISA MAX™ Standard sets that provide the core reagents, our selection of ELISA products meets the demand of ELISA beginners to experts alike at a very economical price.

LEGEND MAX™ Kits, ELISA MAX™ Deluxe and Standard Sets

LEGEND MAX™ ELISA Kit



LEGEND MAX™ ELISA Kits are fully validated and ready-to-use, containing 96-well strip plates pre-coated with capture antibody.

ELISA MAX™ Deluxe Sets contain pre-optimized reagents and additional buffers/solutions, while still being a cost-effective alternative. (*ELISA plates sold separately*)

ELISA MAX™ Standard Sets provide the basics to get the job done. This set is perfect for those who want to stretch their budget by supplying and coating their own plates. (*ELISA plates sold separately*)

ELISA MAX™ Deluxe Set



ELISA MAX™ Standard Set



Product Components

Component	LEGEND MAX™ Kit	ELISA MAX™ Deluxe Set	ELISA MAX™ Standard Set
Pre-coated 96-well stripwell plate	✓		
Pre-titrated Capture Antibody		✓	✓
Pre-titrated Detection Antibody	✓	✓	✓
Recombinant Protein Standard	✓	✓	✓
Avidin-HRP	✓	✓	✓
Coating Buffer		✓	
Wash Buffer	✓		
Assay Buffer/Assay Diluent/Matrix	✓	✓	
Substrate/TMB Solution	✓	✓	
Stop Solution	✓		
Plate Sealers	✓		
Assay Time	4 hours	Overnight +6 hours	Overnight +6 hours
ELISA Experience Level	Beginner-Advanced	Intermediate-Advanced	Intermediate-Advanced

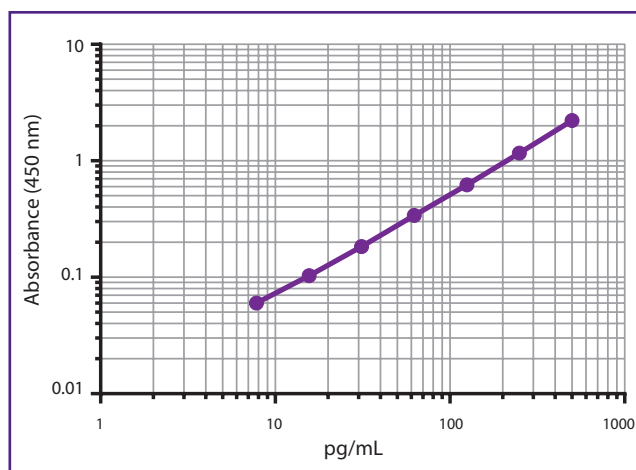
Learn more about our ELISA products at: [biolegend.com/elisa](https://www.biolegend.com/elisa)

Excellent Dynamic Range & Sensitivity

To ensure that the ELISA detects only the protein of interest, antibody reagents are tested for cross-reactivity against a large number of other proteins, isoforms, and multimers (if applicable).

In addition, assay reactivity to orthologous proteins in other species is also assessed.

LEGEND MAX™ Mouse IFN- β ELISA Kit

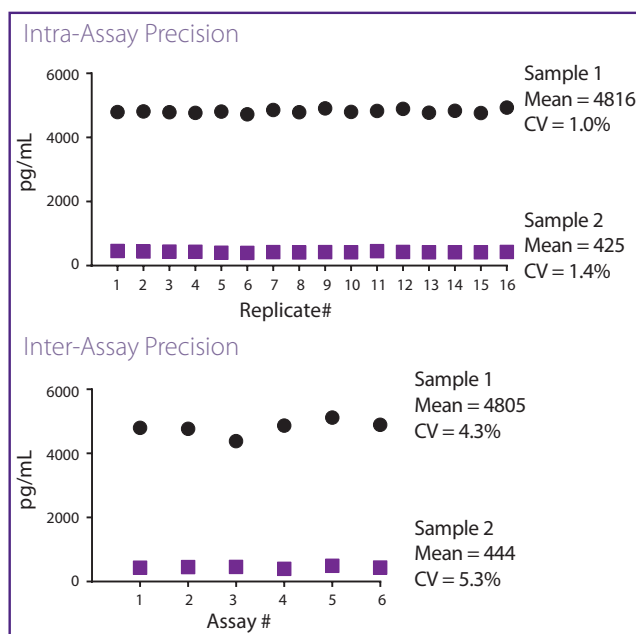


Representative data for a standard curve using the LEGEND MAX™ Mouse IFN- β ELISA kit (Cat. No. 439407).

High Precision & Reproducibility

LEGEND MAX™ Kits are provided with intra-assay and inter-assay precision statistics from replicates within one plate and from plate-to-plate to ensure reproducibility.

LEGEND MAX™ Human Soluble GARP/LRRC32 ELISA Kit



Two samples with different sGARP concentrations were tested for intra and inter-assay precision using the LEGEND MAX™ Human Soluble GARP/LRRC32 ELISA Kit (Cat. No. 440107).

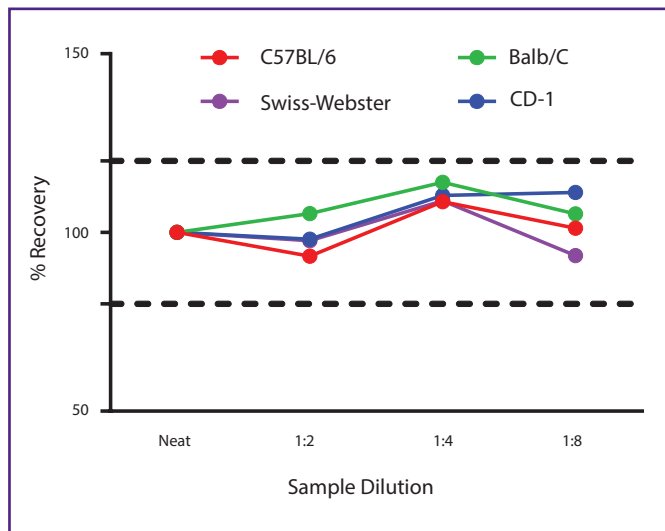


Spike Recovery & Linearity of Dilution

The ability to accurately measure different quantities of a standard spiked into sample matrices describes the recovery characteristics of an ELISA. We collect recovery data for all LEGEND MAX™ Kits, typically tested in serum, plasma, and cell culture supernatant.

LEGEND MAX™ Kits also provide linearity of dilution results, which indicate that the dose-response to an analyte's concentration is linear within the range of the assay standard curve.

LEGEND MAX™ Mouse MCP-1 ELISA Kit



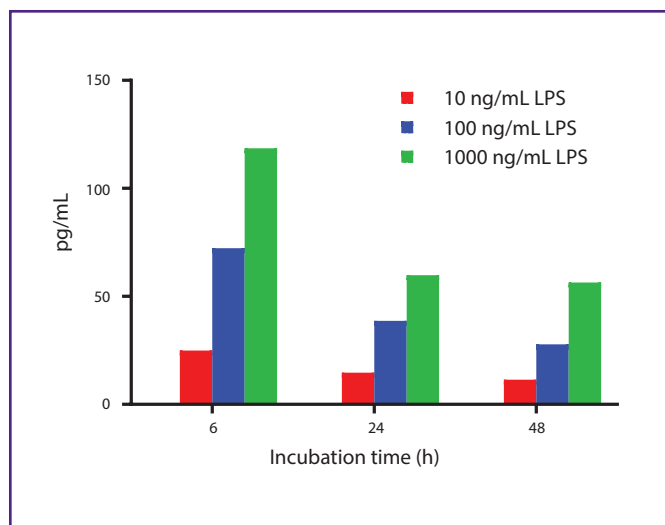
Sera from commonly used mouse strains were serially diluted. MCP-1 concentrations were quantified using the LEGEND MAX™ Mouse MCP-1 ELISA Kit (Cat. No. 446207). Assay linearity fell within the acceptable range (80-120% of undiluted sample).

Biological Sample Detectability

LEGEND MAX™ Kit manuals contain results from testing of *in vitro* biological samples, using biologically relevant conditions in which the expected cytokine or chemokine is produced. Normal serum/plasma values are also provided.

LEGEND MAX™ Kits and ELISA MAX™ Sets are designed for the quantification of proteins in cell culture supernatant, serum, plasma, and other bodily fluids.

IFN- β Production by RAW 264.7 Cells



RAW 264.7 cells were plated in a 12-well plate at 3×10^6 cells/well until 80% confluent, then stimulated with various concentrations of LPS.

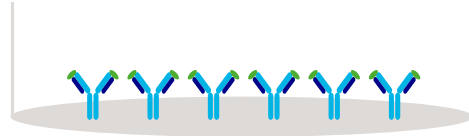
Supernatants were removed at various time points and assayed using the LEGEND MAX™ Mouse IFN- β ELISA Kit (Cat. No. 439407).



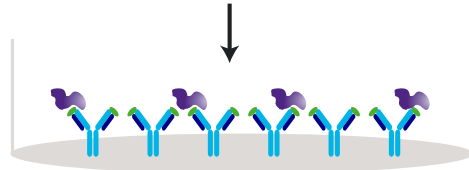
Generalized LEGEND MAX™ ELISA Protocol

(Consult Manual for Assay-specific Requirements)

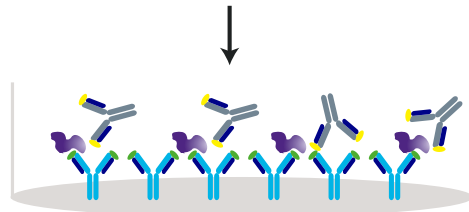
1. Wash 4 times
Add 50 μ L Assay Buffer



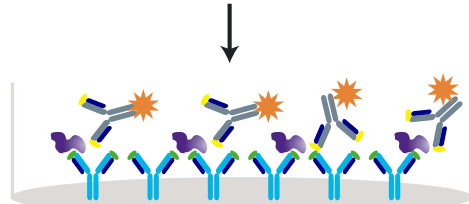
2. Add 50 μ L diluted standards or samples
Incubate 2 hrs, RT, shaking



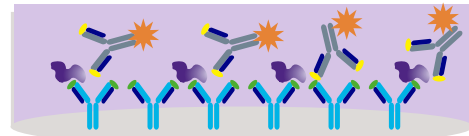
3. Wash 4 times
Add 100 μ L Detection Antibody solution



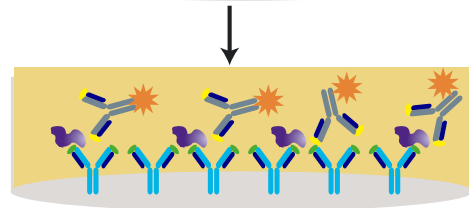
4. Wash 4 times
Add 100 μ L Avidin-HRP A solution



5. Wash 5 times
Add 100 μ L Substrate Solution



6. Add 100 μ L Stop Solution



7. Read absorbance at 450 nm and 570 nm

Featured Products:

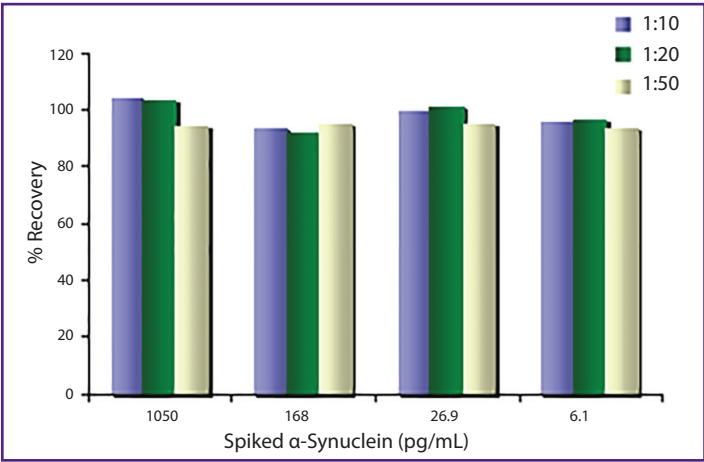
Neuroscience ELISA Kits

Neuroscience ELISA Kits	Cat. No.
LEGEND MAX™ β-Amyloid x-40 ELISA Kit with Pre-coated Plate	842301
LEGEND MAX™ β-Amyloid x-42 ELISA Kit with Pre-coated Plate	842401
LEGEND MAX™ Human α-Synuclein ELISA Kit with Pre-coated Plate	844101

Neurodegeneration plays a vital role in diseases of the central nervous system. BioLegend offers several ELISA kits to detect key proteins implicated in neurodegenerative disorders, such as Alzheimer's and Parkinson's Disease.

Our Human α-Synuclein ELISA Kit (Cat. No. 844101, featured on the right) was made in collaboration with The Michael J. Fox Foundation for Parkinson's Research.

LEGEND MAX™ Human α-Synuclein ELISA Kit



Representative data of the detection of spiked α-Synuclein into Human CSF detected by Human α-Synuclein ELISA Kit (Cat. No. 844101).

Human ELISA Kits and Sets

Human	LEGEND MAX™ Kits (Cat. No.)	ELISA MAX™ Deluxe Sets (Cat. No.)	ELISA MAX™ Standard Sets (Cat. No.)
		5 plates	5 plates
α-Synuclein	844101	-	-
APRIL/TNFSF13	439307	-	-
Adiponectin (Acpr30)	442307	442304	-
BDNF	446607	446604	-
C5a	442107	-	-
CCL2 (MCP-1)	438807	438804	-
CCL5 (RANTES)	440807	440804	-
CCL8 (MCP-2)	-	442204	-
CCL13 (MCP-4)	-	442004	-
CCL17 (TARC)	441107	441104	-
CCL20 (MIP-3α)	441407	441404	-
CCL28	-	441204	-
sCTLA-4	437407	-	-
CXCL5	-	440904	-
CXCL10 (IP-10)	439907	439904	-
Erythropoietin (EPO)	442907	-	-
FGF-basic	434309	434311	-
FGL2	436907	-	-
sGARP/LRRC32	440107	-	-
GM-CSF	432007	432004	432001
Granulysin	438007	-	-
Granzyme B	439207	-	-
Human Anti-mouse Antibodies (HAMA)	438307	-	-
IFN-α2	446407	446404	-
IFN-γ	430107	430104	430101
IGFALS	445907	445904	-
IL-1α	445807	445804	-
IL-1β	437007	437004	-
IL-2	431807	431804	431801
IL-4	430307	430304	430301
IL-5	-	430404	430401
IL-6	430507	430504	430501
IL-8	431507	431504	431501
IL-9	434707	434704	-
IL-10	430607	430604	430601
IL-12/IL-23 (p40)	430707	430704	430701
IL-12 (p70)	431707	431704	431701

Human	LEGEND MAX™ Kits (Cat. No.)	ELISA MAX™ Deluxe Sets (Cat. No.)	ELISA MAX™ Standard Sets (Cat. No.)
		5 plates	5 plates
IL-13	435207	-	-
IL-15	435107	435104	-
IL-17A	433917	433914	-
IL-17A/F	435807	-	-
IL-17F	435707	-	-
IL-21	433807	433804	-
IL-22	434507	434504	-
IL-23	437607	-	-
IL-27	434607	-	-
IL-29 (IFN-λ1)	446307	-	-
IL-31	445707	445704	-
IL-32α	-	433504	-
IL-33	435907	-	-
IL-34	439607	439604	-
Mesothelin	438607	438604	-
MIF (Active)	438407	-	-
MMP-2 (Total)	444607	-	-
MMP-3 (Total)	444807	-	-
MMP-9	444907	-	-
MRP14	445307	-	-
MRP8/14 (Calprotectin)	439707	-	-
Myeloperoxidase (MPO)	440007	-	-
NGAL (Lipocalin-2)	443407	-	-
sNogo B	432807	-	-
PCSK9	443107	-	-
PIGF	446007	446004	-
PTX3	446807	-	-
SCF (Free)	-	442504	-
TGF-β1 (Latent)	432907	-	-
TGF-β1 (Free Active)	437707	-	-
TGF-β1 (Total)	436707	-	-
TNF-α	430207	430204	430201
TSLP	434207	434204	-
VEGF	446507	446504	-
Osteocalcin (Uncarboxylated)	446707	-	-

Analysis of Non-Human Primate (NHP) Samples

In general, NHP targets and their human counterparts share high sequence homology at DNA and protein levels. Many reagents, including antibodies and immunoassay kits intended for use with human samples, may display cross reactivity with NHP samples. However, this has not been fully validated in-house. Please interpret your NHP sample data based on cross-reacting signals with caution.

Mouse ELISA Kits and Sets

Mouse	LEGEND MAX™ Kits (Cat. No.)	ELISA MAX™ Deluxe Sets (Cat. No.)	ELISA MAX™ Standard Sets (Cat. No.)
		5 plates	5 plates
β-Amyloid x-40	842301	-	-
β-Amyloid x-42	842401	-	-
CCL2 (MCP-1)	446207	432704	432701
CCL8 (MCP-2)	446907	446904	-
CCL11	443907	-	-
CXCL12 (SDF-1β)	444207	-	-
CXCL13 (BLC)	441907	-	-
Erythropoietin (EPO)	442707	-	-
FGL2	437807	-	-
GM-CSF	432207	432204	432201
IFN-β	439407	-	-
IFN-γ	430807	430804	430801
IgE	-	432404	432401
IL-1α	-	433404	433401
IL-1β	-	432604	432601
IL-2	431007	431004	431001
IL-4	431107	431104	431101
IL-5	-	431204	431201
IL-6	431307	431304	431301
IL-9	-	442704	-
IL-10	431417	431414	431411
IL-12 (p70)	433607	433604	-
IL-12/IL-23 (p40)	-	431604	431601

Mouse	LEGEND MAX™ Kits (Cat. No.)	ELISA MAX™ Deluxe Sets (Cat. No.)	ELISA MAX™ Standard Sets (Cat. No.)
		5 plates	5 plates
IL-17A/F	436207	436204	-
IL-17A	432507	432504	432501
IL-17F	436107	-	-
IL-21	446107	-	-
IL-22	436307	436304	-
IL-23 (p19/p40)	433707	433704	-
IL-25 (IL-17E)	447107	-	-
IL-27 (Heterodimer)	438707	-	-
IL-33	436407	-	-
IL-34	439107	-	-
IL-35 (Heterodimer)	440507	-	-
Isthmin	438907	-	-
Lactadherin	438107	-	-
LIF	445107	445104	-
MIF	444107	-	-
NGAL (Lipocalin-2)	443707	-	-
OVA Specific IgE	439807	-	-
PCSK9	443207	-	-
Latent TGF-β	433007	-	-
TGF-β1 (Free Active)	437707	-	-
TGF-β1 (Total)	436707	-	-
TNF-α	430907	430904	430901
TSLP	434107	434104	-

Rat ELISA Kits and Sets

Rat	LEGEND MAX™ Kits (Cat. No.)	ELISA MAX™ Deluxe Sets (Cat. No.)
		5 plates
β-Amyloid x-40	842301	-
β-Amyloid x-42	842401	-
Erythropoietin (EPO)	442807	-
IFN-γ	439007	-
IL-6	437107	-
IL-17A	437907	437904
TGF-β1 (Free Active)	437707	-
TGF-β1 (Total)	436707	-
TNF-α	438207	438204

Ancillary ELISA Reagents

Description	Cat. No.
ELISA Assay Diluent (5X)	421203
ELISA Assay Diluent B (5X)	421205
ELISA Coating Buffer (5X)	421701
ELISA Wash Buffer (20X)	421601
HRP Avidin	405103
HRP Streptavidin	405210
Nunc MaxiSorp™ ELISA plates, Uncoated	423501
Plate Sealers	423601
Stop Solution for TMB Substrate	423001
TMB High Sensitivity Substrate Solution	421501
TMB Substrate Set	421101



Frequently Asked Questions

LEGENDplex™

What is the difference between LEGENDplex™ and Luminex® assays?

The LEGENDplex™ and Luminex® platforms both use fluorescence-encoded beads and the basic principles of sandwich immunoassays to multiplex the analysis of several analytes from a single sample. The major difference between the two lies in their modes of data acquisition. LEGENDplex™ can be performed on many commonly available flow cytometers, whereas Luminex®-based cannot be used without dedicated instrumentation.

My standard curve is not linear; can I use the non-linear part of the standard curve during analysis?

Yes. It is possible to use the non-linear part of the standard curve for calculation of results. The LEGENDplex™ data analysis software uses a five-parameter curve-fitting algorithm, which determines the minimum and maximum detection concentrations of each target and reports them. If sample concentrations fall outside of the maximum detectable range, the sample will have to be diluted and reanalyzed.

When do I need to do instrument compensation?

If a single laser instrument is used for both reporter (FL2 or PE) and classification (FL3), then compensation is needed to resolve the signal spillover from FL2 to FL3, and vice-versa. Even on dual laser instruments, some compensation may be required. Please check your machine for the need for compensation and when required, use the compensation beads provided and follow the Flow Cytometer Setup instructions in the LEGENDplex™ manual. In addition, adjust the PMT voltages such that there is good bead separation, the bead populations are not out of scale, and the PE signal is appropriately amplified to ensure proper signal sensitivity.

Is a special software package required for data analysis?

Typically, flow cytometers generate output files in FCS format (e.g. FCS 2.0, 3.0, or 3.1), and in some cases, in list mode file format (LMD). FCS files can be analyzed by different software. Data generated from using LEGENDplex™ kits can be analyzed using the LEGENDplex™ data analysis software freely available for downloading at the BioLegend website (biolegend.com/legendplex). A free-of-charge software license dongle is provided in the kit (required for PC users). The Mac software is available for use with a file license. Please check our website for most updated versions of the software.

What curve-fitting algorithm can I use for generating my standard curve?

The LEGENDplex™ data analysis software uses a default five-parameter curve-fitting algorithm, which determines the minimum and maximum detection concentrations of each target and reports them. If the default algorithm does not work for a particular set of data, other curve-fitting methods are available in the options of the software. If sample concentrations fall outside of the maximum detectable range, the sample will have to be diluted and re-analyzed.

The kit instruction manual says that the kit is validated for serum, plasma, and culture supernatant sample types. Can I also use tissue homogenates with LEGENDplex™?

Yes, all the above sample types may be used with LEGENDplex™ kits as long as they are prepared in a manner compatible with immunoassays. Tissue homogenate samples should be prepared in a neutral pH buffer containing no denaturing chemicals (e.g. SDS, urea, thiourea, cholate, etc.), no ionic detergents, and minimal amounts of non-ionic detergents (e.g. NP-40). The homogenization buffer should avoid excessive ionic salt concentrations (i.e. above physiological levels), and should contain protease inhibitors. In addition, the samples should be centrifuged after lysis in order to remove particulates.

After I finish the assays, how long can I wait before reading my samples (beads) on a flow cytometer?

The plate or tubes containing the bead assays can be re-suspended in Wash Buffer, kept overnight at 4°C while being protected from light, and be read the next day. There may be a decrease in signal, but overall, the assay results should not be significantly affected. Storing the samples for extended periods of time is not recommended, as it could lead to further reductions in signal.

Should I perform the assay with the filter plates or with V-bottom plates?

The filter plate and V-bottom plate LEGENDplex™ assay formats have comparable performance characteristics. The use of one format over another is a decision to be made by the end user based on the availability of laboratory equipment. A vacuum filtration unit is required to work with the filter plates. However, if you don't have access to a vacuum manifold, then you can use the V-bottom plates as described in the manual following the recommended assay protocols. **Regardless, all plates should be manufactured from low binding polypropylene. Polystyrene ELISA or cell culture plates should not be used.**

Frequently Asked Questions

ELISA

What is the shelf life of BioLegend ELISA Products?

BioLegend's LEGEND MAX™ Kits are guaranteed for 3 months from the date of receipt. ELISA MAX™ Sets are guaranteed for 12 months from the date of receipt. For a lot-specific expiration date, refer to the box label on each Kit or Set.

What is the difference between LEGEND MAX™, ELISA MAX™ Deluxe, and ELISA MAX™ Standard?

See Page 16 of this brochure.

What are the stopping points in the ELISA assay?

The plates can be coated with the capture antibody overnight at 4°C, then subsequently be stored at 4°C for an additional 1-2 days. As for the blocking step, you can keep the plate in the blocking buffer overnight or 1-2 days at 4°C (sealed) and continue with the rest of the protocol. The plates should not be allowed to dry. It should be noted that prolonged storage of the plates after coating with antibody prior to use can eventually lead to increased background signal.

When should I use LEGEND MAX™ ELISA Kits with pre-coated plates vs. other products?

LEGEND MAX™ Kits are ready-to-go, designed for ease-of-use, minimizing requirements for coating the ELISA plates and preparing buffer dilutions. We recommend LEGEND MAX™ Kits for users who are new to ELISAs or are short on time.

Are BioLegend ELISA kits compatible with tissue samples?

BioLegend's ELISA products can be used for tissue/cell extract/homogenate samples as long as the samples are prepared in such a way that they are compatible with immune-reactivity.

Tips for sample preparation:

- Tissues/cells should be lysed or homogenized in a neutral pH buffer that contains no denaturing chemicals (such as urea, thiourea, SDS).
- No/minimal levels of detergent (SDS, Triton X-100 etc).
- No excessive ionic strength (salt concentration greater than physiological ionic strength).
- The buffers should contain sufficient protease inhibitor cocktails to preserve the target proteins from proteolytic degradation by enzymes released from cells.

Interested in our products?
Contact your local representative today:
[biolegend.com/en-us/contact-local-rep](https://www.biolegend.com/en-us/contact-local-rep)

Contact BioLegend

Customer Service:

US & Canada Toll-Free: 1.877.246.5343 (877-BIOLEGEND)

International: 1.858.768.5800

Fax: 1.877.455.9587

email: cs@biolegend.com

Technical Service:

US & Canada Toll-Free: 1.877.273.3103

International: 1.858.768.5801

email: tech@biolegend.com

Headquarters:

BioLegend

8999 BioLegend Way

San Diego, CA 92121

USA

International Offices

Europe:

BioLegend

4B Highgate Business Centre

33 Greenwood Place

London NW5 1LB

United Kingdom

Tel: +44 (0) 20 3475 3880

Fax: +44 (0) 20 3318 3271

email *Inquiries:*

infoeurope@biolegend.com

email *Technical Support:*

techeurope@biolegend.com

Japan:

BioLegend

Tel: +81-3-5615-8093

email *Inquiries:*

supportjp@biolegend.com

biolegend.com/jp

China

BioLegend

Room 1701, Block C, Ruipu Mansion

No. 15 South Hongjunyung Road

China

Tel: +86 10 64828744

email *Inquiries:*

tech-china@biolegend.com

For complete worldwide ordering details, visit: biolegend.com

